

ISSN 1027-4081

Fréttarit KOS

Nr. 28

Tölur ársins 2002

**KJARARANNSÓKNARNEFND OPINBERRA STARFSMANNA (KOS)
skipa nú eftirtaldir aðilar:**

Fulltrúar atvinnurekenda:

Birgir Björn Sigurjónsson
Gunnar Björnsson
Hrönn Pálsdóttir
Karl Björnsson
- óskipað

Fulltrúar launafólks:

Árni Sigurjónsson
Eiríkur Jónsson
Gunnar Gunnarsson
Jens Andrésson
Ómar S. Harðarson

Framkvæmdastjórn **KOS** skipa:

Birgir Björn Sigurjónsson, Gunnar Gunnarsson, Hrönn Pálsdóttir
og Ómar S. Harðarson

Skrifstofa **KOS**

Framkvæmdastjóri : Geir Thorsteinsson
Fulltrúi :

Heimilisfang :

KJARARANNSÓKNARNEFND OPINBERRA STARFSMANNA
BORGARTÚNI 21, 4. hæð.
105 REYKJAVÍK

Síminn hjá KOS er: 562 - 6030

Netfang: kos@simnet.is
Heimasíða á Netinu: <http://www.simnet.is/kos>

EFTIRPRENTUN ER HEIMIL ÚR RITINU, ENDA SÉ UPPRUNA GETIÐ

ISSN 1027-4081

KJARARANNSÓKNARNEFND OPINBERRA STARFSMANNA starfar samkvæmt 34. grein laga nr. 94/1986 um kjarasamninga opinberra starfsmanna, sem hljóðar þannig:

Á vegum þeirra aðila, sem lög þessi taka til, starfi nefnd er annist kjararannsóknir og aðra upplýsingaöflun vegna kjarasamninga.

Nefndin skal skipuð jafnmörgum fulltrúum stéttarféлага og vinnuveitenda samkvæmt nánari ákvæðum í reglugerð sem sett skal að fengnum tillögum heildarsamtaka opinberra starfsmanna og Sambands íslenskra sveitarfélaga.

Nefndin setur sér starfsreglur, m.a. um starfssvið og starfshætti.

Kostnaður við störf nefndarinnar greiðist úr ríkissjóði.

FRÉTTARIT KOS

Nr. 28

Maí 2003

Tölur ársins 2002

Útgefandi: Kjararannsóknarnefnd
opinberra starfsmanna

Skrifstofa KOS: Borgartúni 21, 4. hæð
105 REYKJAVÍK
Sími: 562-6030

Netfang: kos@simnet.is

Heimasíða KOS: <http://www.simnet.is/kos>

Efnisyfirlit

1. Fréttarit KOS Nr. 27

1.1 Skýringar	5
1.2 Frá framkvæmdastjórn KOS	7
1.3 Listi yfir stéttarfélög og hópa sem eru í heftinu	8

2. Starfsmenn ríkis og Reykjavíkurborgar

2.1 Yfirlit um skiptingu og fjölda opinberra starfsmanna	9
2.2 Meðallaun opinberra starfsmanna ríkis og Reykjavíkurborgar	10
2.3 Dreifing dagvinnulauna stéttarfélaganna og hópa eftir kyni í maí 2002	12

3. Meðaltal dagvinnulauna, yfirvinnulauna og annarra launa

3.1 BSRB, ríkisstarfsmenn	17
3.2 BHM, ríkisstarfsmenn	23
3.3 Kennarasamband Íslands, ríkisstarfsmenn	36
3.4 Ýmsir, ríkisstarfsmenn	37
3.5 Starfsmenn Reykjavíkurborgar	45

4. Starfsmenn annarra sveitarfélaga

4.1 Inngangur	49
4.2 Meðaltöl hjá nokkrum sveitarfélögum árið 2001	50

5. Ýmislegt

5.1 Vísitala neysluverðs (framfærsluvísitala) með grunn 1981:	52
---	----

1. Fréttarit KOS

1.1 Skýringar

Í þessari útgáfu eru starfsmenn ríkisins, sem fá greidd laun sem unnin eru í launavinnslukerfi ríkisins og starfsmenn Reykjavíkurborgar sem fá laun úr launavinnslukerfi Reykjavíkurborgar. Jafnframt eru í heftinu launaupplýsingar frá nokkrum öðrum sveitarfélögum en

Reykjavíkurborg. Áfram er unnið að því að taka inn hópa frá fleiri bæjar- og sveitarfélögum og fyrst um sinn er miðað við að fá tölur frá öllum kaupstöðum svo og öðrum sveitarfélögum, sem hafa fleiri en 1000 íbúa.

Skýringar:

GR. STG.	=	Greidd stöðugildi í dagvinnu (Stg.)
STÖÐUGILDI	=	Samanlagt starfshlutfall starfsmanna í hverjum hóp. (STG).
DAGVINNUL.	=	Laun og aðrar greiðslur sem greiddar eru fyrir dagvinnutíma, (Dl.)
YFIRVL.	=	Greidd laun fyrir yfirvinnu. (Yl.)
ÖNNUR L.	=	Öll önnur greidd laun á launaseðlum. (Öl.)
HEILDARL.	=	Summan af dagvinnulaunum, yfirvinnulaunum og öðrum launum (Hl.)
MEÐAL MÁN- AÐARLAUN	=	Summa dagvinnulauna deilt með summu stöðugilda fyrir hvert félag eða hóp

Breyting var gerð á vinnslu dagvinnulauna frá og með 1990. Öll laun sem tilheyra dagvinnu reiknast nú sem dagvinnulaun og um leið reiknast þau yfir í hlutfall stöðugilda og koma þar einnig til viðbótar.

Á undanförunum árum hafa orðið breytingar á aðild stéttarfélaganna að bandalögum og hópar starfsmanna, sem áður voru í tilteknu stéttarfélagi, hafa stofnað ný en dæmi eru einnig um stéttarfélög sem hafa sameinast. Þá hafa orðið umfangsmiklar breytingar á tímabilinu á

hópunum „Kjaradómur“ og „Utan félaganna“ einkum vegna setningar laga nr. 120/1992 um Kjaradóm og kjaranefnd, sem leiddi m.a. til þess að stofnað var til hópsins „Kjaranefnd“ frá mars 1993. Í kjölfar setningar laga nr. 70/1996 og afleiddra lagabreytinga á sérlögum hafa enn orðið tilfærslur í hópunum „Kjaradómur“ og „Kjaranefnd“. Þessar breytingar hafa falið í sér að einstaklingar sem voru yfirleitt áður í stéttarfélögum (háskólumanna) hafa verið settir undir Kjaradóm og Kjaranefnd. Þá var með lögum ákveðið að frá 1. ágúst 1996

skyldu kennarar og skólastjórnendur við grunnskóla vera starfsmenn sveitarfélaga. Ekki eru gerðar sérstakar ráðstafanir til að reikna hópa, félög eða bandalög afturvirkir út frá breyttum forsendum. Í flestum tilvikum byrja slíkir hópar eða félög frá þeim tíma sem til þeirra er stofnað. Stjórnumerkt er við slík félög

og getið upphafstímabilis sem kaupmáttarútreikningur miðast við.

Athuga ber að meðaltölur launa sumarmánaða eru að jafnaði lægri en aðra mánuði vegna afleysinga og ráðninga sumarfólks.

Ástæða er til að vekja sérstaka athygli á breyttum hlutföllum launategunda hjá mörgum stéttarfélögum, sem m.a. má rekja til nýja launakerfisins, sem tók gildi í kjölfar kjarasamninga á árabílinu 1997 - 2002. Dagvinnulaunahluti þeirra eykst en yfirvinnuhluti minnkar.

Jafnframt geta verið sveiflur í launum á milli mánaða hjá einstökum stéttarfélögum og/eða hópum vegna afturvirkra leiðréttinga á launum.

1.2 Frá framkvæmdastjórn KOS

Í þessu hefti KOS eru upplýsingar á grunni frá og með árinu 1990. Eins og áður er unnið úr öllum greiddum launum frá viðkomandi launaskrifstofum.

Kosturinn við þessar upplýsingar, umfram þær sem fást við kaup og kjör annarra en þeirra er vinna hjá ríki og borg, er að hér er **ekki um úrtak** að ræða. Upplýsingarnar ná til launa, sem skráð eru í launavinnslukerfi ríkisins og launavinnslukerfi Reykjavíkurborgar. Þar með er ekki sagt að efnið sé gallalaust.

Tölurnar sýna laun allra þeirra, sem í starfi eru á hverjum tíma. Þetta getur valdið erfiðleikum í samanburði. T.d. lækka meðaldagvinnulaun flestra stéttarféлага yfir sumarmánuðina, vegna þess að sumarafleysingafólkið kemur inn í lægstu starfsaldursþreppin og verður að taka tillit til þess, þegar sumarmánuðirnir eru bornir saman við aðra mánuði.

Meðallaun og kaupmáttur lítilla hópa, geta breyst mjög mikið við það eitt, að nokkrir starfsmenn í efsta starfsaldursþreppi fara á eftirlaun en nýliðar taka við.

Stærsta vandamálið er þó að ná í samanburðarhæfar tölur um laun og aðrar

greiðslur til launþega á almennum vinnu-umarkaði og þeirra opinberu starfsmanna sem ekki eru í launavinnslukerfi ríkisins eða launavinnslukerfi Reykjavíkurborgar

KOS vinnur að því m.a. að finna leiðir til að endurbæta talnaefnið með tilliti til ofantalinna þátta.

Breytingar voru gerðar á útliti og innihaldi 20. Fréttarits KOS. Meðallaun á félög og hópa voru kyngreind, ef fjöldi karla eða kvenna nær 10 stöðugildum. Myndir sýna nú dreifingu dagvinnulauna innan hvers félags/hóps. Markmiðið með breytingunum er að gefa lesendum betri upplýsingar. Ætlunin er að fitja upp á frekari breytingum í framtíðinni.

1.3 Listi yfir stéttarfélög og hópa sem eru í heftinu

BSRB, ríkisstarfsmenn

Félag flugmálastarfsmanna ríkisins
Félag starfsmanna stjórnarráðsins
Landssamband Lögreglumanna
Sjúkraliðafélag Íslands
Starfsmannafélag ríkisútvarpsins
Starfsmannafélag sjónvarpsins
Starfsmannafélag ríkisstofnana, tæknih.
Starfsmannafélag ríkisst., skrifstofuh.
Starfsmannafélag ríkisstofnana, heilbr.h.
Starfsmannafélag ríkisstofnana, alls
Tollvarðafélag Íslands
BSRB félögin hjá ríkinu, alls

BHM, ríkisstarfsmenn

Félag tækniskólakennara
Kennarafélag KHÍ (Kennaraháskóla Íslands)
Dýralæknafélag Íslands
Stéttarfélag sálfræðinga á Íslandi.
Stéttarfélag sjúkraþjálfara
Iðjuþjálfafélag Íslands
Stéttarfélag íslenskra félagsráðgjafa
Meinataeknafeleg Íslands
Félag íslenskra geislafræðinga
Félag íslenskra náttúrufræðinga
Fél. ísl. félagsvísindamanna
Félag íslenskra fræða - kjaradeild
Ljósmeðrafélag Íslands
Stéttarfélag bókasafns- og upplýsingafræðinga
Félag fréttamanna
Félag háskólakennara
Félag háskólakennara á Akureyri
Fél. háskólam. starfsm. stjórnarráðsins
Félag íslenskra hjúkrunarfræðinga
Kjaraf. viðskipta- og hagfræðinga
Stéttarfél. háskólam. á matvæla- og næringsviði
Stéttarfélag lögfræðinga
Útgardur, félag háskólamanna
Þroskaþjálfafélag Íslands
BHM félögin hjá ríkinu, alls

Kennarasamband Íslands

Kennarasamband Íslands framhaldsskólar

Ýmsir hópar ríkisstarfsmanna

Félag íslenskra flugumferðarstjóra
Kjarafélag Tæknifræðingafélags Íslands
Læknafeleg Íslands
Starfsmannafél. Sinfóníuhlj. Íslands
Stéttarfélag verkfræðinga
Kjaranefnd heilsugæslulækna
Kjaranefnd prófessorar
Kjaradómur
Kjaradómur, dómara
Kjaranefnd
Leikarafélag Íslands
Utan félaga
Kjaranefnd prestar þjóðkirkjunnar
Stéttarfélag íslenskra lyfjafræðinga
Starfsmannafélag Alþingis

Reykjavíkurborg

Starfsmannafélag Reykjavíkurborgar
án háskólahóps
Starfsmannafélag Reykjavíkurborgar, háskólahópur
Starfsmannafélag Reykjavíkurborgar alls
Félag íslenskra leikskólakennara hjá Rborg.
Sjúkraliðafélag Íslands
Háskólahópur innan BHM
Háskólahópur utan bandalaga
Kennarahópur hjá Rborg

Önnur sveitarfélög.

Kos hefur m.a. að markmiði að safna upplýsingum frá öllum kaupstöðum og þeim sveitarfélögum sem hafa 1000 íbúa eða fleiri. Launakerfin sem notuð eru í sveitarfélögum hafa verið undirbúin til þess að skila gögnum, eða þá að verið er að undirbúa þau til þess að geta skilað þessum gögnum til KOS. Jafnframt hafa sum sveitarfélögin verið að skipta um tölvukerfi. Kjaranannsóknarnefnd (ASÍ og SA, skammstafað KRN) hefur unnið að því undanfarin ár að þróa prófunarforrit á þessi gögn. Áfram munu KOS og KRN safna upplýsingum sameiginlega frá sveitarfélögum. Í þessu hefti KOS eru ekki nýjar upplýsingar frá öðrum sveitarfélögum en Reykjavíkurborg, vegna starfsmannaskorts.

2. Starfsmenn ríkis og Reykjavíkurborgar

Hér á eftir fer yfirlit um samsetningu hópa og bandalaga skipt eftir kyni, upplýsingar um meðallaun og að síðustu

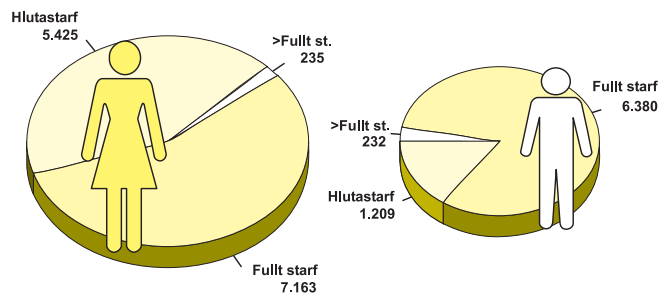
dreifing dagvinnulauna karla og kvenna skipt eftir stéttarfélögum/hópum.

2.1 Yfirlit um skiptingu og fjölda opinberra starfsmanna ríkis og Reykjavíkurborgar í nóvember 2002

Alls voru 20.644 einstaklingar í gagnasafninu í nóvember 2002. Það svarar til u.þ.b. 14 % af fjölda vinnandi manna á

Íslandi. Konur voru 12.823 og karlar voru 7.821.

Mynd 2.1.1. Skipting fjölda eftir kyni og hlutfalli starfs



Taflan hér á eftir sýnir skiptingu starfsmanna eftir kyni og starfshlutfalli innan bandalaga og hópa. Eingöngu er um að ræða ríkisstarfsmenn neðangreindra bandalaga og hópa.

Tölurnar fyrir Reykjavíkurborg sýna skiptingu allra opinberra starfsmanna Reykjavíkurborgar.

Tafla 2.1.1 Skipting fjölda eftir hópum, kynjum og hlutfalli starfs.

Hópur	Kyn	Hlutastarf		Fullt starf		>Fullt starf		Samtölur	
		Fjöldi	Hlutfall	Fjöldi	Hlutfall	Fjöldi	Hlutfall	Fjöldi	Hlutfall
BSRB ríkisstarfsmenn	Karlar	370	15,66%	1.901	80,45%	92	3,89%	2.363	100,00%
	Konur	2.074	48,06%	2.145	49,71%	96	2,22%	4.315	100,00%
BHM ríkisstarfsmenn	Karlar	198	13,16%	1.258	83,64%	48	3,19%	1.504	100,00%
	Konur	1.538	44,88%	1.819	53,08%	70	2,04%	3.427	100,00%
Kennarasamband Íslands	Karlar	72	10,00%	644	89,44%	4	0,56%	720	100,00%
	Konur	148	21,96%	523	77,60%	3	0,45%	674	100,00%
Ýmsir ríkisstarfsmenn	Karlar	253	14,71%	1.404	81,63%	63	3,66%	1.720	100,00%
	Konur	111	18,81%	465	78,81%	14	2,37%	590	100,00%
Starfsmenn Reykjavíkurborgar	Karlar	316	20,87%	1.173	77,48%	25	1,65%	1.514	100,00%
	Konur	1.554	40,71%	2.211	57,93%	52	1,36%	3.817	100,00%

Hlutfallstölur eru reiknaðar af heildarfjölda einstaklinga innan hvers kyns innan hvers hóps eða bandalags

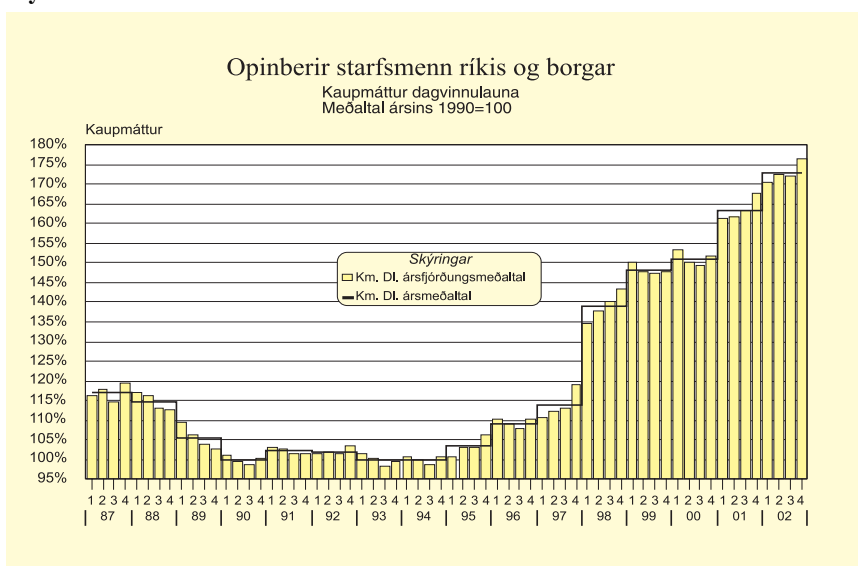
2.2 Meðallaun opinberra starfsmanna ríkis og Reykjavíkurborgar frá og með 1. ársfjórðungi 1987. Kaupmáttur miðast við meðaltal ársins 1990 = 100

Ár	Stg.	DI.	Breyting	HI.	Breyting	Km.DI	Km.HI.
1987	16.805,15	49.904		71.855		117,12	115,94
1988	17.515,13	61.496	23,23%	87.804	22,20%	114,76	112,65
1989	18.064,45	68.203	10,91%	97.777	11,36%	105,41	103,89
1990	18.486,49	74.761	9,62%	108.744	11,22%	100,00	100,00
1991	18.497,11	81.604	9,15%	121.686	11,90%	102,21	104,78
1992	19.011,68	84.693	3,79%	126.520	3,97%	102,01	104,77
1993	19.093,22	86.323	1,92%	128.262	1,38%	99,93	102,08
1994	19.539,24	87.785	1,69%	132.140	3,02%	100,06	103,55
1995	19.856,16	92.178	5,00%	138.914	5,13%	103,36	107,09
1996	19.786,59	99.605	8,06%	150.291	8,19%	109,23	113,31
1997	19.016,52	105.545	5,96%	160.072	6,51%	113,71	118,56
1998	17.511,81	131.229	24,33%	189.300	18,26%	138,99	137,84
1999	16.845,24	144.540	10,14%	207.022	9,36%	148,30	146,03
2000	17.980,55	154.867	7,14%	223.304	7,86%	151,11	149,79
2001	17.910,40	178.289	15,12%	252.606	13,12%	163,51	159,27
2002	18.813,88	198.185	11,16%	275.224	8,95%	172,81	164,99

Ár	Ársfj.	Stg.	DI.	Breyting	HI.	Breyting	Km.DI	Km.HI.
1987	1	16.278,38	45.924		67.405		116,34	117,40
	2	16.902,54	48.539	5,69%	71.362	5,87%	117,77	119,04
	3	17.192,63	49.911	2,83%	67.825	-4,96%	114,64	107,10
	4	16.847,04	55.113	10,42%	80.764	19,08%	119,25	120,15
1988	1	16.921,24	57.982	5,21%	84.801	5,00%	117,16	117,81
	2	17.526,45	60.208	3,84%	86.140	1,58%	116,16	114,25
	3	18.013,09	63.401	5,30%	85.895	-0,28%	113,09	105,34
	4	17.599,75	64.208	1,27%	94.302	9,79%	112,71	113,80
1989	1	17.743,25	64.779	0,89%	95.078	0,82%	109,56	110,56
	2	18.210,10	67.116	3,61%	96.240	1,22%	106,13	104,63
	3	18.495,68	68.825	2,55%	94.171	-2,15%	103,70	97,55
	4	17.808,75	72.078	4,73%	105.782	12,33%	102,84	103,76
1990	1	18.022,80	73.616	2,13%	105.445	-0,32%	101,17	99,63
	2	18.304,75	74.121	0,69%	107.576	2,02%	99,63	99,41
	3	19.252,42	74.731	0,82%	102.054	-5,13%	98,85	92,80
	4	18.366,00	76.555	2,44%	120.158	17,74%	100,35	108,29
1991	1	17.878,81	79.648	4,04%	119.665	-0,41%	103,07	106,46
	2	18.667,43	81.055	1,77%	121.795	1,78%	102,83	106,23
	3	19.288,88	82.025	1,20%	114.704	-5,82%	101,33	97,42
	4	18.153,31	83.649	1,98%	130.983	14,19%	101,61	109,39
1992	1	18.659,89	83.934	0,34%	125.462	-4,22%	101,42	104,23
	2	19.206,39	84.287	0,42%	127.366	1,52%	101,76	105,72
	3	19.584,69	84.367	0,09%	117.116	-8,05%	101,43	96,80
	4	18.595,74	86.217	2,19%	136.610	16,65%	103,48	112,72
1993	1	18.531,27	86.341	0,14%	127.949	-6,34%	101,57	103,48
	2	19.210,56	85.963	-0,44%	127.954	0,00%	100,39	102,73
	3	19.799,55	85.587	-0,44%	119.030	-6,97%	98,32	94,01
	4	18.831,49	87.448	2,17%	138.590	16,43%	99,53	108,44
1994	1	18.910,64	88.049	0,69%	130.674	-5,71%	100,78	102,83
	2	19.690,19	87.544	-0,57%	134.501	2,93%	99,94	105,56
	3	20.252,67	86.956	-0,67%	122.102	-9,22%	98,88	95,46
	4	19.303,45	88.641	1,94%	141.699	16,05%	100,72	110,69
1995	1	17.890,62	89.188	0,62%	134.113	-5,35%	100,53	103,93
	2	20.408,56	91.493	2,58%	140.400	4,69%	103,17	108,85
	3	21.116,89	92.109	0,67%	128.459	-8,50%	103,03	98,78
	4	20.008,56	95.622	3,81%	152.724	18,89%	106,35	116,77
1996	1	20.040,51	99.458	4,01%	149.069	-2,39%	110,15	113,50
	2	20.781,34	99.189	-0,27%	150.624	1,04%	109,06	113,86
	3	20.330,94	98.658	-0,54%	138.882	-7,80%	107,69	104,22
	4	17.993,58	101.318	2,70%	164.159	18,20%	110,25	122,81
1997	1	18.517,27	101.711	0,39%	159.611	-2,77%	110,60	115,92
	2	19.308,21	103.895	2,15%	164.881	3,30%	112,22	118,90
	3	19.843,03	105.106	1,17%	153.364	-6,99%	112,88	110,00
	4	18.397,58	111.610	6,19%	182.644	19,09%	119,21	130,01
1998	1	16.957,25	126.325	13,18%	182.724	0,04%	134,40	133,66
	2	17.644,34	130.526	3,33%	189.726	3,83%	137,94	137,85
	3	18.127,02	132.073	1,19%	179.207	-5,54%	140,04	130,63
	4	17.318,64	135.862	2,87%	205.869	14,88%	143,41	149,40
1999	1	16.361,06	143.226	5,42%	202.797	-1,49%	150,30	146,31
	2	16.994,97	142.853	-0,26%	206.290	1,72%	147,82	146,75
	3	17.386,24	144.524	1,17%	196.093	-4,94%	147,22	137,32
	4	16.638,70	147.573	2,11%	223.344	13,90%	147,95	153,94

Ár	Ársfj.	Stg.	DI.	Breyting	HI.	Breyting	Km.DI	Km.HI.
2000	1	17.625,33	154.535	4,72%	221.613	-0,78%	153,30	151,14
	2	18.300,45	153.530	-0,65%	223.291	0,76%	150,17	150,15
	3	18.472,61	153.764	0,15%	212.719	-4,73%	149,47	142,16
	4	17.523,80	157.760	2,60%	236.176	11,03%	151,63	156,06
2001	1	17.449,29	168.690	6,93%	238.655	1,05%	161,18	156,77
	2	18.030,74	174.515	3,45%	252.625	5,85%	161,64	160,87
	3	18.521,30	180.920	3,67%	245.241	-2,92%	163,15	152,04
	4	17.640,28	188.881	4,40%	274.121	11,78%	167,68	167,30
2002	1	19.420,35	194.559	3,01%	266.507	-2,78%	170,49	160,56
	2	18.655,54	197.296	1,41%	277.352	4,07%	172,29	166,51
	3	19.010,89	197.368	0,04%	264.311	-4,70%	172,05	158,41
	4	18.168,74	203.827	3,27%	293.774	11,15%	176,64	175,03

Mynd 2.2.1



Ath. að stór hópur ríkisstarfsmanna fellur út úr gagnasafni KOS frá og með áramótum 1996 -1997, s.s. starfsmenn Pósts og Síma og grunnskólakennarar annarra sveitarfélaga en Reykjavíkurborgar.

Ástæða er til að vekja sérstaka athygli á breyttum hlutföllum launategunda hjá mörgum stéttarfélögum, sem m.a. má rekja til nýja launakerfisins, sem tók gildi í kjölfar kjarasamninga sem gerðir voru árið 1997. Dagvinnulaunahluti þeirra eykst en yfirvinnuhluti minnkar.

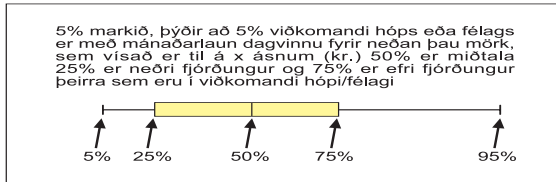
Jafnframt geta verið sveiflur í launum á milli mánaða hjá einstökum stéttarfélögum og/eða hópum vegna afturvirkra leiðréttinga á launum.

2.3 Dreifing dagvinnulauna stéttarfélaga og hópa eftir kyni í nóvember 2002.

Hér á eftir eru sýnd gröf, þar sem er búið að reikna dreifingu mánaðarlauna í dagvinnu hjá stéttarfélögum/hópum. Miðað er við nóvembermánuð 2002 og dagvinnulaun mánaðarins eru eins og áður

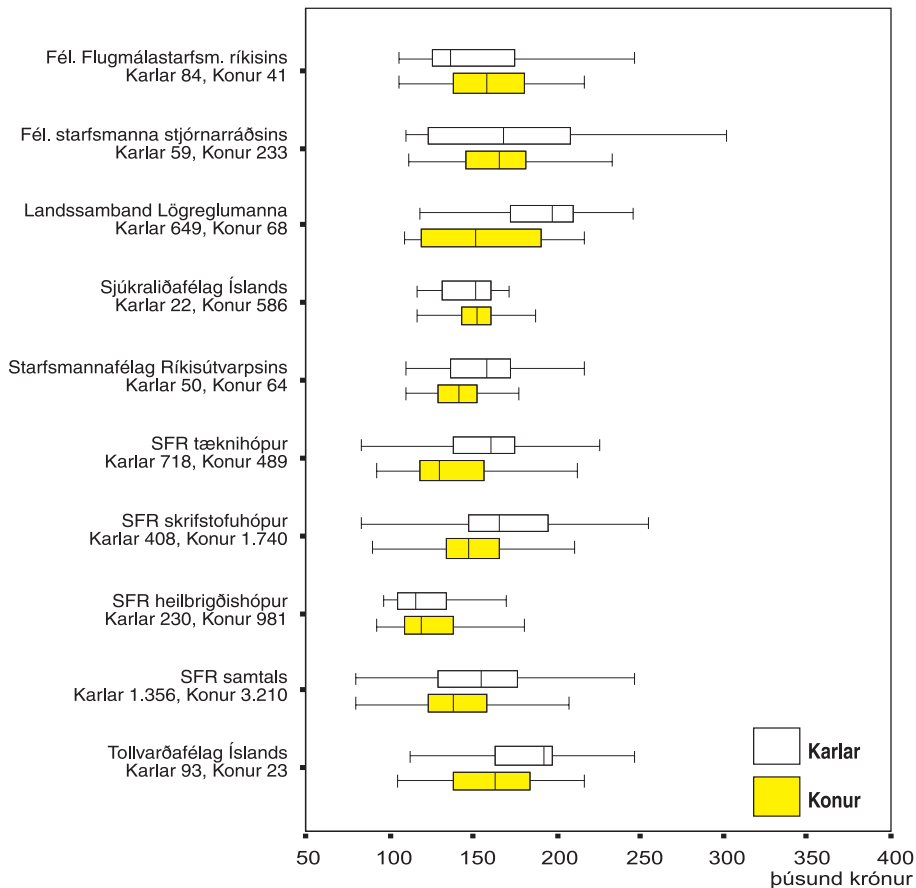
uppreiknuð miðað við fullt starf. Starfsmönnum með minna en 10% starf var sleppt. Fjöldi starfsmanna af hvoru kyni er sýndur fyrir neðan nafn hvers félags/hóps.

Skýring:



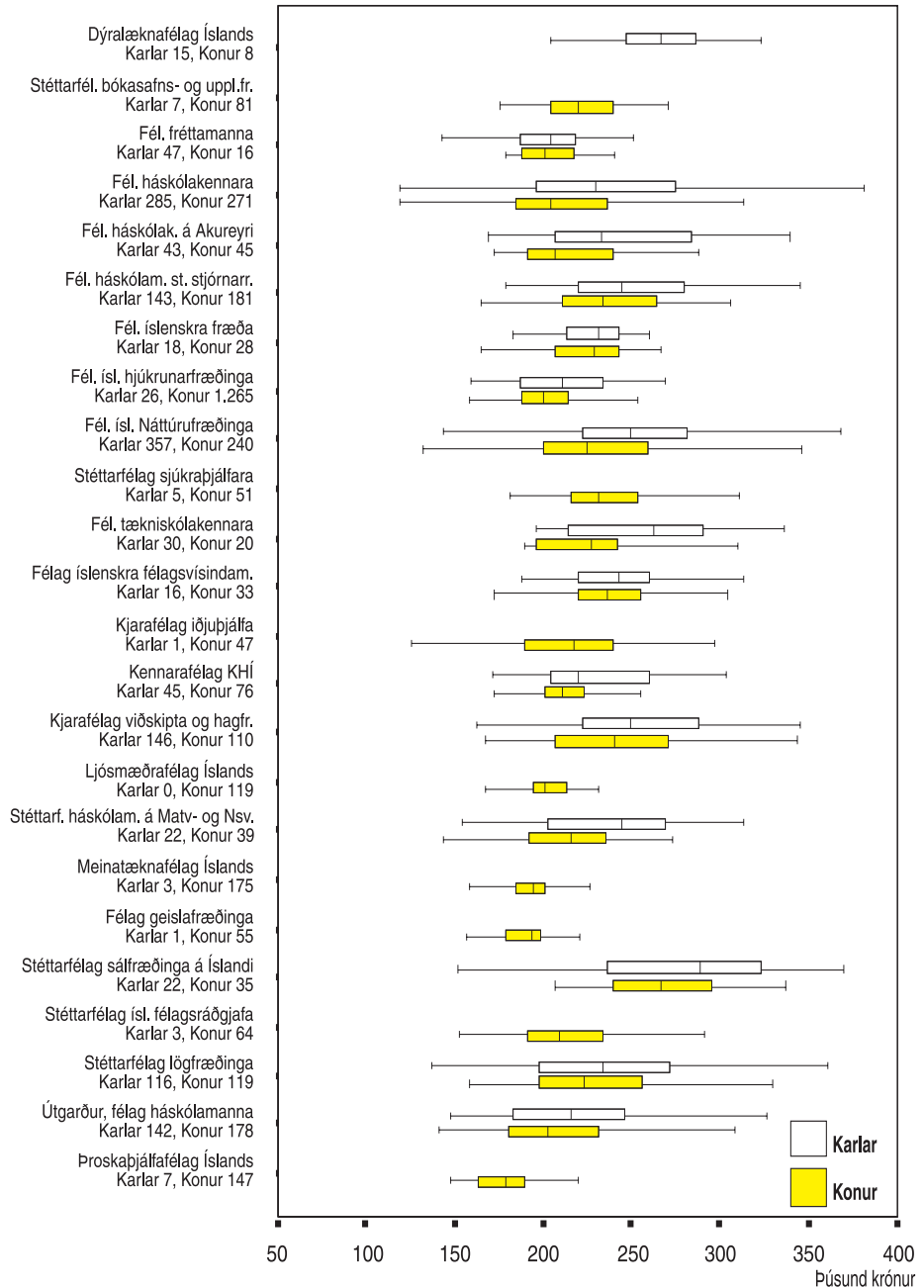
Mynd 2.3.1

*Dreifing dagvinnulauna í nóvember 2002
BSRB ríkisstarfsmenn*



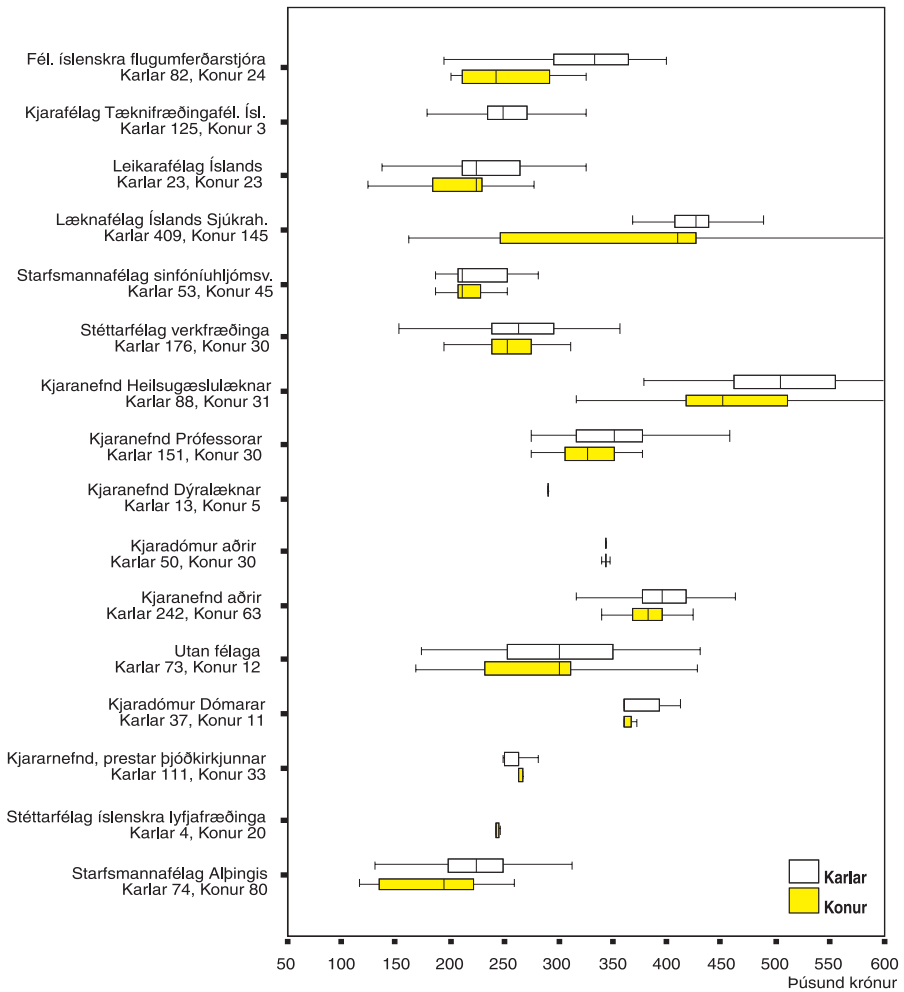
Dreifing dagvinnulauna í nóvember 2002
BHM ríkisstarfsmenn

Mynd 2.3.2



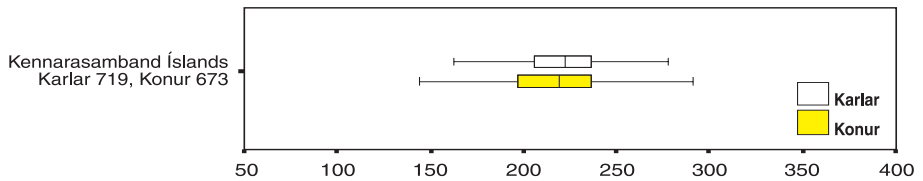
Mynd 2.3.3

Dreifing dagvinnulauna í nóvember 2002
ÝMSIR ríkisstarfsmenn



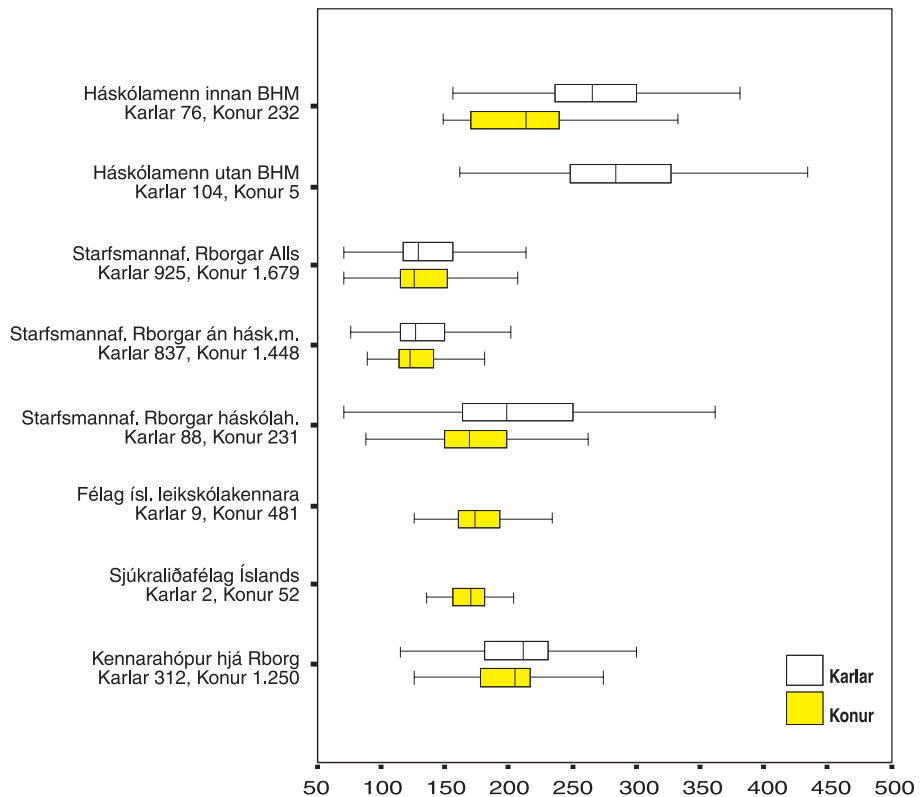
Mynd 2.3.4

*Dreifing dagvinnulauna í nóvember 2002
Kennarasamband Íslands ríkisstarfsmenn*



Mynd 2.3.5

*Dreifing dagvinnulauna í nóvember 2002
Starfsmenn Reykjavíkurborgar*



3. Meðaltal dagvinnulauna, yfirvinnulauna og annarra launa, ásamt heildarlaunum og kaupmætti dagvinnulauna, skipt eftir kyni

Athuga ber að önnur laun fyrir apríl og desember eru heldur hærrí en aðra mánuði í eftirtöldum töflum því orlofsframlag, desemberuppbót og óregluleg önnur laun eru meðtalin.

Ástæða er til að vekja sérstaka athygli á breyttum hlutföllum launategunda hjá mörgum stéttarfélögum, sem m.a. má rekja til nýja launakerfisins, sem tók gildi í kjölfar kjarasamninga á árabílinu 1997 - 2002. Dagvinnulaunahluti þeirra eykst en yfirvinnuhluti minnkar.

Jafnframt geta verið sveiflur í launum á milli mánaða hjá einstökum stéttarfélögum og/eða hópum vegna afturvirkra leiðréttinga á launum.

Hér á næstu síðum eru útreiknuð meðallaun eftir félögum, hópum og bandalögum ásamt kaupmætti dagvinnulauna.

Kaupmáttur miðar við janúar 1987 = 100, nema annað sé tekið sérstaklega fram.

Ekki eru birtar kynskiptar meðaltölur fyrir hópa sem hafa færri en 10 stöðugildi annaðhvort hjá körlum eða konum.

Skýringar:

MA = mánuður	DL = dagvinnulaun
YL = yfirvinnulaun	ÖL = önnur laun
HL = heildarlaun	Km.dl. = kaupmáttur dagvinnulauna
STG = stöðugildi	AR = Ár

Félag flugmálastarfsmanna ríkisins

		<i>Karlar</i>						<i>Allir</i>						<i>Konur</i>				
MA	AR	STG	DL	YL	OL	HL	STG	DL	YL	OL	HL	Km.dl.	STG	DL	YL	OL	HL	
1	2002	82,71	151.934	90.043	53.760	295.737	122,93	153.951	81.565	41.065	276.581	152,91	40,23	158.100	64.133	14.962	237.195	
2	2002	80,10	150.239	83.630	48.595	282.464	120,58	153.369	76.011	36.526	265.905	152,75	40,48	159.561	60.935	12.642	233.138	
3	2002	78,61	151.080	87.670	48.589	287.338	118,46	154.366	79.760	36.894	271.020	153,10	39,85	160.848	64.154	13.823	238.826	
4	2002	79,03	151.019	87.939	62.955	301.913	118,96	154.469	82.191	50.115	286.776	153,14	39,93	161.299	70.816	24.702	256.817	
5	2002	81,25	150.512	87.422	48.782	286.716	122,22	154.150	79.824	36.974	270.948	152,88	40,97	161.363	64.756	13.558	239.677	
6	2002	83,44	149.941	86.986	42.999	279.926	126,29	153.501	79.607	32.743	265.851	151,59	42,85	160.433	65.237	12.771	238.441	
7	2002	87,97	147.882	80.415	43.371	271.668	134,02	151.505	71.489	32.236	255.229	149,48	46,06	158.425	54.440	10.967	223.832	
8	2002	83,72	149.183	94.480	44.831	288.494	129,26	152.509	83.445	33.763	269.718	151,29	45,53	158.625	63.155	13.414	235.194	
9	2002	83,02	149.568	70.431	44.725	264.724	123,78	153.956	67.467	34.359	255.782	151,94	40,76	162.894	61.428	13.245	237.568	
10	2002	78,58	151.427	89.169	44.192	284.788	117,74	155.563	80.038	34.112	269.714	152,73	39,16	163.864	61.714	13.883	239.462	
11	2002	80,08	151.410	77.085	50.038	278.533	118,99	155.475	70.781	38.397	264.653	152,92	38,90	163.843	57.805	14.435	236.083	
12	2002	81,78	152.652	76.139	83.231	312.022	120,64	156.391	69.981	75.322	301.694	153,71	38,86	164.259	57.023	58.678	279.959	

Félag starfsmanna stjórnarráðsins

		<i>Karlar</i>						<i>Allir</i>						<i>Konur</i>				
MA	AR	STG	DL	YL	ÖL	HL	STG	DL	YL	ÖL	HL	Km.dl.	STG	DL	YL	ÖL	HL	
1	2002	56,80	167.242	107.343	16.375	290.961	263,06	163.128	42.368	3.956	209.453	143,17	206,26	161.995	24.475	536	187.007	
2	2002	57,24	167.194	102.814	16.028	286.036	268,03	162.987	43.380	3.817	210.184	143,44	210,79	161.845	27.240	502	189.586	
3	2002	56,04	167.864	111.511	16.216	295.591	262,42	163.168	43.656	3.871	210.696	143,00	206,38	161.893	25.231	519	187.643	
4	2002	57,05	169.157	115.188	27.141	311.486	264,19	164.570	45.497	14.604	224.671	144,17	207,14	163.307	26.303	11.151	200.762	
5	2002	61,32	168.112	124.433	16.309	308.855	280,72	164.093	56.332	4.027	224.452	143,81	219,40	162.970	37.297	594	200.861	
6	2002	67,69	164.790	103.244	16.201	284.236	302,88	161.916	44.669	4.226	210.811	141,29	235,19	161.089	27.811	779	189.679	
7	2002	68,72	165.212	90.637	15.637	271.486	306,18	162.212	39.394	4.451	206.056	141,43	237,46	161.344	24.564	1.213	187.121	
8	2002	68,84	167.901	106.204	15.611	289.716	304,85	164.256	41.490	4.962	210.708	143,98	236,02	163.192	22.615	1.856	187.664	
9	2002	64,62	168.458	116.084	14.118	298.660	277,84	166.728	47.266	3.799	217.793	145,40	213,23	166.204	26.412	672	193.288	
10	2002	60,65	173.440	108.693	12.937	295.070	274,55	168.308	44.612	3.272	216.193	146,01	213,90	166.853	26.443	532	193.828	
11	2002	59,01	173.318	105.118	13.295	291.731	276,15	167.860	43.324	3.301	214.486	145,89	217,14	166.377	26.529	585	193.492	
12	2002	59,64	173.645	107.440	49.643	330.728	281,39	167.552	52.820	39.391	259.763	145,52	221,75	165.913	38.130	36.633	240.677	

BSRB, ríkisstarfsmenn

Landssamband lögreglumanna												
Kartlar												
MA	AR	STG	DL	YL	ÖL	HL	STG	DL	YL	ÖL	HL	
1	2002	608,25	197,621	114,272	70,924	382,816	656,78	195,239	112,789	70,173	378,201	163,98
2	2002	620,74	196,899	102,562	61,433	360,894	672,41	194,368	100,310	60,531	355,209	163,69
3	2002	625,37	195,949	92,483	56,806	345,238	678,77	193,343	90,329	56,332	340,004	162,14
4	2002	626,40	196,570	109,158	74,604	380,332	678,22	194,067	107,364	74,171	375,602	162,68
5	2002	680,44	191,880	99,315	57,593	348,787	749,54	188,374	95,363	55,753	339,489	157,98
6	2002	718,49	188,050	110,921	60,819	359,790	797,71	184,389	106,879	59,551	350,819	153,97
7	2002	734,36	187,251	92,531	49,913	329,695	815,31	183,613	89,975	49,529	323,116	153,19
8	2002	726,42	186,487	88,953	49,675	325,115	811,99	182,531	85,660	48,520	316,712	153,11
9	2002	670,93	192,828	85,930	56,146	334,903	742,02	189,215	83,324	55,503	328,042	157,90
10	2002	656,12	193,482	89,813	58,135	341,430	723,29	190,104	86,667	56,815	333,586	157,82
11	2002	647,84	193,189	95,689	64,119	353,007	716,46	189,673	92,033	62,635	344,341	157,74
12	2002	648,28	193,497	92,692	105,643	391,832	713,40	190,212	89,904	103,611	383,727	158,08

Sjúkraliðafélag Íslands *Kaupmáttur miðast við 01/1992 = 100,00*

Kartlar												
MA	AR	STG	DL	YL	ÖL	HL	STG	DL	YL	ÖL	HL	
1	2002	19,79	149,015	56,426	54,807	260,248	458,11	151,025	56,682	37,130	244,838	167,14
2	2002	18,67	151,160	49,181	44,664	245,005	461,59	151,251	43,488	31,861	226,601	167,85
3	2002	20,14	150,022	68,748	52,264	271,034	471,46	151,130	68,415	34,877	254,422	167,01
4	2002	19,83	150,549	63,605	57,205	271,360	465,64	151,040	61,644	44,566	257,250	166,84
5	2002	20,32	148,348	56,904	52,993	258,245	491,79	150,338	67,330	34,303	251,971	166,14
6	2002	20,73	148,172	34,842	36,678	219,692	510,45	149,443	38,096	31,108	218,647	164,44
7	2002	21,84	147,051	37,116	36,233	220,400	500,54	149,408	34,915	25,396	209,719	164,26
8	2002	20,98	147,340	36,057	30,867	214,264	492,56	149,727	49,587	27,354	226,668	165,50
9	2002	20,90	148,233	43,998	47,408	239,638	479,04	151,435	39,598	35,252	226,285	166,52
10	2002	20,36	147,721	60,422	52,447	260,591	483,37	151,167	36,826	35,989	223,982	165,37
11	2002	20,41	147,807	58,977	46,659	253,443	488,19	151,255	43,212	36,552	231,019	165,76
12	2002	21,37	148,080	69,126	82,102	299,308	491,07	151,149	55,656	70,533	277,338	165,53

Starfsmannafélag ríkisútvarpsins*Starfsmannafélag sjónvarpsins sameinast Starfsmannafélagi ríkisútvarpsins frá og með janúar 2002*

		Karlar						Allir						Konur				
MA	AR	STG	DL	YL	ÖL	HL	STG	DL	YL	ÖL	HL	Km.dl.	STG	DL	YL	ÖL	HL	
1	2002	48,22	150.974	80.300	18.053	249.328	106,42	143.300	63.832	11.192	218.324	127,89	58,21	136.943	50.190	5.508	192.641	
2	2002	48,31	150.499	64.723	21.161	236.383	105,21	143.215	51.069	12.764	207.048	128,17	56,89	137.030	39.473	5.633	182.136	
3	2002	48,48	150.428	57.552	16.778	224.757	105,86	143.595	50.195	10.247	204.038	127,97	57,38	137.822	43.979	4.729	186.530	
4	2002	47,45	151.686	73.257	21.686	246.630	103,49	144.361	60.634	17.743	222.738	128,60	56,04	138.159	49.945	14.404	202.508	
5	2002	52,78	147.908	54.431	13.931	216.271	110,55	142.192	51.535	9.135	202.862	126,72	57,77	136.969	48.889	4.752	190.610	
6	2002	47,92	149.316	53.595	13.452	216.363	111,62	141.142	47.431	8.464	197.037	125,24	63,71	134.993	42.795	4.713	182.501	
7	2002	49,05	148.239	39.603	10.254	198.096	117,50	139.802	38.460	6.190	184.451	123,94	68,45	133.755	37.640	3.277	174.672	
8	2002	46,89	151.360	52.838	8.407	212.605	110,06	142.556	44.296	5.848	192.700	127,07	63,17	136.022	37.957	3.948	177.927	
9	2002	48,04	152.699	55.554	13.746	221.998	104,16	146.050	49.327	8.507	203.883	129,51	56,12	140.358	43.995	4.022	188.375	
10	2002	50,01	156.058	69.519	13.372	238.948	105,95	149.981	58.815	8.327	217.123	132,31	55,94	144.549	49.248	3.818	197.614	
11	2002	49,25	155.813	79.557	15.164	250.534	105,64	149.312	64.148	8.915	222.376	131,96	56,39	143.635	50.691	3.458	197.783	
12	2002	50,57	156.769	59.323	45.756	261.849	107,40	149.930	49.060	42.568	241.558	132,41	56,83	143.845	39.929	39.731	223.505	

Starfsmannafélag ríkisstofnana, tæknihópur

		Karlar						Allir						Konur				
MA	AR	STG	DL	YL	ÖL	HL	STG	DL	YL	ÖL	HL	Km.dl.	STG	DL	YL	ÖL	HL	
1	2002	704,29	152.907	67.462	15.930	236.299	1.124,62	146.211	59.711	13.390	219.313	140,64	420,33	134.992	46.724	9.135	190.851	
2	2002	703,57	154.043	68.453	15.358	237.854	1.113,14	147.665	57.987	13.013	218.665	142,43	409,57	136.709	40.009	8.985	185.703	
3	2002	703,59	155.160	69.958	15.846	240.963	1.110,16	148.392	59.976	13.450	221.818	142,53	406,57	136.680	42.702	9.304	188.685	
4	2002	695,81	155.331	72.574	29.178	257.083	1.101,08	148.695	62.327	26.652	237.674	142,76	405,28	137.301	44.734	22.315	204.350	
5	2002	736,12	153.845	67.393	15.243	236.482	1.170,30	147.094	57.023	12.730	216.847	141,28	434,18	135.647	39.441	8.470	183.558	
6	2002	823,07	150.353	60.788	12.102	223.242	1.353,33	142.828	49.527	10.208	202.563	136,60	530,26	131.149	32.047	7.269	170.465	
7	2002	818,50	149.744	56.838	11.320	217.902	1.339,33	142.481	45.875	9.564	197.920	136,15	520,83	131.066	28.645	6.805	166.516	
8	2002	795,93	150.609	58.368	11.222	220.199	1.284,73	143.684	48.145	9.656	201.485	138,04	488,80	132.408	31.500	7.106	171.014	
9	2002	670,55	157.307	71.307	13.627	242.241	1.063,17	150.160	58.932	11.895	220.988	143,52	392,62	137.954	37.797	8.938	184.688	
10	2002	664,31	160.485	72.254	15.306	248.045	1.063,75	153.111	60.541	12.995	226.647	145,58	399,44	140.847	41.061	9.153	191.061	
11	2002	673,05	160.329	72.476	15.843	248.649	1.071,94	153.429	60.506	13.854	227.789	146,14	398,89	141.786	40.308	10.498	192.592	
12	2002	690,01	159.223	74.143	54.445	287.811	1.103,06	151.897	63.418	51.379	266.694	144,59	413,05	139.659	45.500	46.257	231.416	

Starfsmannafélag ríkisstofnana, skrifstofuhópur

	AR	<i>Karlar</i>				
		STG	DL	YL	ÖL	HL
1	2002	374,01	169.496	71.309	7.822	248.626
2	2002	374,35	169.856	74.852	7.388	252.096
3	2002	378,17	171.069	76.902	9.066	257.037
4	2002	371,54	171.231	75.224	18.868	265.323
5	2002	391,14	169.184	73.342	6.960	249.486
6	2002	432,65	164.822	65.687	6.353	236.862
7	2002	428,98	164.643	64.922	6.391	235.956
8	2002	423,92	165.582	61.593	6.714	233.889
9	2002	379,77	172.039	75.081	8.237	255.357
10	2002	378,35	175.498	76.831	7.419	259.749
11	2002	381,69	175.103	77.132	8.858	261.093
12	2002	385,77	176.017	72.677	43.415	292.109

Starfsmannafélag ríkisstofnana, heilbrigðishópur

MA	AR	<i>Karlar</i>				
		STG	DL	YL	ÖL	HL
1	2002	172,72	119.598	52.052	33.901	205.551
2	2002	169,44	120.232	32.699	36.602	189.533
3	2002	164,15	119.587	28.048	34.627	182.261
4	2002	163,86	120.223	59.983	43.034	223.240
5	2002	174,95	119.320	45.472	31.608	196.401
6	2002	189,85	119.604	37.150	29.310	186.064
7	2002	196,02	118.955	26.188	25.112	170.256
8	2002	201,63	119.088	28.259	27.148	174.495
9	2002	174,58	120.925	30.107	35.435	186.467
10	2002	173,89	124.930	27.968	36.077	188.976
11	2002	176,82	125.315	30.150	37.763	193.229
12	2002	185,84	124.577	28.595	67.721	220.893

	<i>Allir</i>						Km.dl.	<i>Konur</i>				
	STG	DL	YL	ÖL	HL	STG		DL	YL	ÖL	HL	
	1.900,88	151.733	35.375	3.237	190.346	145,26	1.526,87	147.382	26.573	2.114	176.070	
	1.884,39	151.832	37.515	2.959	192.307	145,76	1.510,05	147.364	28.260	1.861	177.485	
	1.896,34	152.442	37.910	3.263	193.616	145,73	1.518,17	147.803	28.198	1.817	177.817	
	1.894,10	152.777	37.702	14.131	204.610	145,99	1.522,56	148.274	28.546	12.975	189.795	
	1.999,23	151.493	37.685	2.945	192.123	144,82	1.608,09	147.189	29.012	1.969	178.171	
	2.208,65	148.449	33.420	2.753	184.622	141,30	1.776,00	144.461	25.559	1.876	171.896	
	2.223,61	148.209	31.432	2.674	182.316	140,95	1.794,63	144.281	23.427	1.786	169.494	
	2.153,87	149.315	30.705	2.687	182.707	142,77	1.729,96	145.329	23.136	1.700	170.165	
	1.908,51	153.983	38.007	3.065	195.054	146,47	1.528,73	149.497	28.796	1.780	180.074	
	1.918,42	158.174	37.315	3.042	198.531	149,68	1.540,07	153.917	27.607	1.967	183.491	
	1.910,47	158.242	38.096	3.761	200.099	150,01	1.528,79	154.032	28.350	2.489	184.871	
	1.914,60	158.992	37.237	40.139	236.368	150,62	1.528,83	154.696	28.295	39.312	222.303	

	<i>Allir</i>						Km.dl.	<i>Konur</i>				
	STG	DL	YL	ÖL	HL	STG		DL	YL	ÖL	HL	
	859,26	122.922	45.492	27.799	196.214	124,54	686,54	123.759	43.842	26.264	193.864	
	848,96	123.068	28.532	31.049	182.648	125,03	679,52	123.775	27.492	29.664	180.931	
	843,43	123.241	28.780	28.575	180.595	124,68	679,28	124.124	28.956	27.112	180.192	
	852,75	123.883	50.888	37.631	212.402	125,28	688,89	124.753	48.725	36.346	209.824	
	907,96	122.459	38.393	25.979	186.831	123,89	733,01	123.208	36.703	24.635	184.547	
	1.058,85	121.526	30.505	25.740	177.770	122,42	869,00	121.945	29.053	24.959	175.957	
	1.081,40	121.300	24.384	23.410	169.093	122,08	885,38	121.819	23.984	23.033	168.836	
	1.077,15	121.433	24.771	23.256	169.459	122,88	875,52	121.973	23.967	22.360	168.300	
	842,47	124.565	27.015	30.213	181.793	125,40	667,89	125.516	26.207	28.848	180.571	
	841,92	128.097	26.850	31.304	186.250	128,29	668,03	128.921	26.558	30.061	185.541	
	847,48	128.086	27.515	32.888	188.489	128,51	670,66	128.816	26.820	31.603	187.239	
	871,10	127.840	26.552	67.640	222.032	128,17	685,26	128.725	25.998	67.618	222.341	

Starfsmannafélag ríkisstofnana, samtals

		<i>Karlar</i>						<i>Allir</i>						<i>Konur</i>				
MA	AR	STG	DL	YL	ÖL	HL	STG	DL	YL	ÖL	HL	Km.dl.	STG	DL	YL	ÖL	HL	
1	2002	1.251,02	153.268	66.485	15.987	235.739	3.884,76	143.762	44.658	11.609	200.030	139,67	2.633,74	139.247	34.291	9.530	183.067	
2	2002	1.247,36	154.196	65.517	15.852	235.564	3.846,49	144.278	41.457	12.068	197.803	140,55	2.599,14	139.518	29.911	10.252	179.681	
3	2002	1.245,91	155.302	66.544	16.262	238.108	3.849,93	144.877	42.273	11.746	198.896	140,54	2.604,02	139.889	30.660	9.584	180.133	
4	2002	1.231,21	155.457	71.698	27.911	255.065	3.847,93	145.206	47.671	22.922	215.798	140,80	2.616,73	140.382	36.366	20.574	197.322	
5	2002	1.302,21	153.814	66.235	14.954	235.003	4.077,49	143.765	43.393	10.883	198.041	139,46	2.775,28	139.049	32.675	8.973	180.698	
6	2002	1.445,57	150.645	59.150	12.641	222.436	4.620,83	140.633	37.469	10.204	188.306	135,84	3.175,26	136.076	27.599	9.094	172.768	
7	2002	1.443,50	149.991	55.078	11.728	216.797	4.644,34	140.292	33.956	9.489	183.737	135,39	3.200,84	135.918	24.430	8.480	168.827	
8	2002	1.421,48	150.603	55.059	12.137	217.799	4.515,75	141.062	34.251	9.576	184.889	136,87	3.094,28	136.679	24.692	8.400	169.771	
9	2002	1.224,90	156.689	66.605	15.064	238.358	3.814,15	146.420	41.412	11.523	199.354	141,34	2.589,24	141.561	29.493	9.848	180.902	
10	2002	1.216,55	160.072	67.347	15.822	243.242	3.824,09	150.144	41.472	12.033	203.648	144,18	2.607,54	145.511	29.399	10.265	185.176	
11	2002	1.231,56	159.881	67.842	16.825	244.549	3.829,89	150.222	42.027	13.031	205.280	144,51	2.598,34	145.644	29.791	11.233	186.668	
12	2002	1.261,62	159.255	66.985	53.028	279.268	3.888,76	150.001	42.270	49.488	241.759	144,20	2.627,14	145.558	30.401	47.787	223.746	

Tollvarðafélag Íslands

		<i>Karlar</i>						<i>Allir</i>						<i>Konur</i>				
MA	AR	STG	DL	YL	ÖL	HL	STG	DL	YL	ÖL	HL	Km.dl.	STG	DL	YL	ÖL	HL	
1	2002	95,88	181.929	145.050	31.414	358.393	119,38	177.123	141.892	32.251	351.265	142,91	23,50	157.514	129.009	35.664	322.187	
2	2002	99,70	182.189	105.429	34.433	322.051	121,83	178.074	104.776	35.135	317.986	144,07	22,13	159.534	101.835	38.299	299.668	
3	2002	96,59	183.001	96.050	30.643	309.693	119,93	177.622	91.136	31.110	299.868	143,10	23,35	155.369	70.806	33.044	259.219	
4	2002	96,00	183.861	117.569	41.259	342.690	118,62	179.735	116.867	41.379	337.981	144,74	22,62	162.222	113.886	41.885	317.993	
5	2002	101,66	179.737	102.464	30.205	312.406	129,22	174.010	97.441	29.758	301.210	140,19	27,56	152.888	78.915	28.108	259.911	
6	2002	109,02	175.728	85.058	29.220	290.005	146,23	167.174	78.312	28.751	274.237	134,10	37,21	142.117	58.550	27.377	228.044	
7	2002	107,80	176.401	85.413	30.520	292.334	146,38	167.029	78.179	31.136	276.344	133,87	38,58	140.840	57.965	32.859	231.664	
8	2002	106,56	176.395	89.180	28.886	294.461	143,48	167.603	83.744	30.611	281.958	135,06	36,92	142.225	68.053	35.591	245.869	
9	2002	96,93	182.386	100.981	34.900	318.267	121,64	177.770	95.865	35.673	309.307	142,51	24,71	159.661	75.793	38.703	274.157	
10	2002	93,99	184.657	87.941	33.400	305.999	116,77	180.330	85.362	33.772	299.463	143,81	22,78	162.470	74.718	35.306	272.494	
11	2002	91,63	185.151	95.243	33.453	313.847	113,63	181.138	92.497	34.226	307.861	144,72	22,00	164.423	81.060	37.448	282.931	
12	2002	91,74	184.958	96.710	75.899	357.567	113,74	181.051	95.683	77.053	353.787	144,55	22,00	164.759	91.398	81.867	338.024	

BSRB, ríkisstarfsmenn

BSRB félagin hjá ríkinu, alls																	
		Kerfar						Konur									
MA	AR	STG	DL	YL	ÖL	HL	Allir	STG	DL	YL	ÖL	HL	STG	DL	YL	ÖL	HL
1	2002	2.162,67	167.239	85.598	33.978	286.814	5.621,89	152.284	56.758	21.246	230.289	140,33	3.459,24	142.935	38.707	13.286	194.929
2	2002	2.172,12	167.773	79.428	31.309	278.509	5.606,12	152.751	51.048	20.152	223.951	141,14	3.433,99	143.249	33.097	13.094	189.441
3	2002	2.171,14	168.256	77.073	30.095	275.424	5.618,80	153.079	52.283	19.617	224.980	140,85	3.447,67	143.523	36.672	13.018	193.213
4	2002	2.156,97	168.732	86.323	43.461	298.517	5.605,95	153.507	58.338	31.388	243.233	141,18	3.448,99	143.986	40.837	23.837	208.660
5	2002	2.299,99	166.302	79.619	29.786	275.707	5.970,43	151.780	54.612	19.023	225.414	139,65	3.670,44	142.679	38.942	12.278	193.900
6	2002	2.493,73	162.816	77.076	28.570	268.462	6.625,63	148.462	48.097	18.283	214.841	136,02	4.131,90	139.799	30.606	12.073	182.479
7	2002	2.514,36	162.264	68.764	25.093	256.122	6.674,14	148.143	42.925	16.209	207.277	135,60	4.159,78	139.607	27.306	10.840	177.753
8	2002	2.475,11	162.660	69.082	25.174	256.916	6.518,25	148.886	44.375	16.427	209.688	137,02	4.043,15	140.453	29.251	11.072	180.777
9	2002	2.209,34	168.701	75.119	29.774	273.594	5.670,38	154.341	48.902	19.854	223.097	141,31	3.461,03	145.174	32.167	13.521	190.863
10	2002	2.176,26	171.059	76.935	30.568	278.563	5.653,51	157.026	49.023	20.210	226.259	143,02	3.477,25	148.244	31.553	13.727	193.524
11	2002	2.179,78	170.690	78.803	32.947	282.440	5.656,70	156.951	50.535	21.739	229.224	143,21	3.476,92	148.337	32.812	14.713	195.861
12	2002	2.215,00	170.320	77.013	70.513	317.846	5.724,15	156.791	51.981	58.514	267.286	142,97	3.509,15	148.251	36.180	50.940	235.372

Dýralæknafélag Íslands

MA	AR	<i>Karlar</i>					<i>Allir</i>					Km.dl.	<i>Konur</i>					
		STG	DL	YL	ÖL	HL	STG	DL	YL	ÖL	HL		STG	DL	YL	ÖL	HL	
1	2002						20,78	252.958	41.698	0	294.656	168,92						
2	2002						20,56	255.793	44.358	54.487	354.637	171,28						
3	2002						19,38	255.572	63.147	74.128	392.847	170,41						
4	2002						20,80	251.692	62.156	68.364	382.212	167,75						
5	2002						19,86	255.017	50.878	67.761	373.657	170,04						
6	2002						20,27	253.856	60.953	44.822	359.631	168,54						
7	2002						18,91	257.528	53.128	69.727	380.383	170,83						
8	2002						20,61	253.531	67.964	76.441	397.936	169,09						
9	2002						26,51	253.841	45.877	46.920	346.639	168,42						
10	2002						22,86	251.531	54.435	49.751	355.716	166,02						
11	2002						20,28	256.467	57.949	60.163	374.579	169,58						
12	2002						22,49	251.022	52.570	77.227	380.819	165,87						

Stéttarfélag bókasafns- og upplýsingafræðinga

MA	AR	<i>Karlar</i>					<i>Allir</i>					Km.dl.	<i>Konur</i>					
		STG	DL	YL	ÖL	HL	STG	DL	YL	ÖL	HL		STG	DL	YL	ÖL	HL	
1	2002						77,57	222.121	23.817	14	245.952	160,28						
2	2002						77,71	221.980	24.224	86	246.290	160,62						
3	2002						77,19	224.383	25.608	74	250.066	161,67						
4	2002						76,33	224.041	26.117	14.627	264.784	161,36						
5	2002						76,69	225.179	24.672	101	249.951	162,25						
6	2002						73,02	225.816	21.511	0	247.327	162,01						
7	2002						73,40	225.747	21.569	245	247.561	161,82						
8	2002						74,81	226.722	20.967	398	248.087	163,40						
9	2002						73,27	226.835	23.121	246	250.202	162,63						
10	2002						73,25	226.885	26.117	246	253.248	161,83						
11	2002						74,91	226.770	23.449	240	250.460	162,03						
12	2002						77,60	226.288	28.405	34.916	289.609	161,58						

BHM, ríkisstarfsmenn

Félag fréttamanna

		Karlar					Allir					Konur					
MA	AR	STG	DL	YL	ÖL	HL	STG	DL	YL	ÖL	HL	Km.dl.	STG	DL	YL	ÖL	HL
1	2002	42,77	204.839	127.320	30.635	362.794	56,52	203.200	119.364	32.252	354.815	146,66	13,75	198.100	94.614	37.281	329.995
2	2002	43,66	203.876	93.790	28.188	325.854	56,76	202.769	85.492	29.434	317.696	146,75	13,10	199.080	57.827	33.589	290.496
3	2002	41,63	212.307	97.535	27.431	337.273	54,83	210.661	89.076	27.584	327.322	151,82	13,20	205.469	62.390	28.067	295.926
4	2002	43,53	210.099	139.477	36.903	386.479	56,69	209.067	138.982	35.895	383.943	150,61	13,16	205.654	137.344	32.560	375.557
5	2002	44,55	209.194	131.279	25.544	366.017	58,25	207.916	122.028	25.214	355.158	149,84	13,70	203.760	91.955	24.141	319.857
6	2002	48,94	200.957	101.320	25.660	327.938	64,64	200.974	103.541	25.670	330.184	144,22	15,70	201.026	110.464	25.698	337.187
7	2002	53,99	197.379	77.767	19.886	295.032	70,74	198.152	73.232	20.729	292.113	142,07	16,76	200.641	58.623	23.445	282.710
8	2002	53,90	198.769	96.911	22.179	317.859	70,93	199.297	86.425	20.738	306.460	143,66	17,03	200.967	53.230	16.177	270.374
9	2002	45,07	207.585	81.326	30.040	318.951	59,07	207.170	74.981	29.202	311.353	148,57	14,00	205.834	54.553	26.503	286.890
10	2002	43,75	209.467	93.918	30.241	333.626	58,66	208.681	88.291	28.541	325.513	148,88	14,92	206.377	71.785	23.554	301.717
11	2002	44,97	208.545	100.753	27.408	336.706	61,08	208.112	91.612	28.177	327.901	148,74	16,12	206.905	66.109	30.322	303.335
12	2002	44,03	207.424	75.279	61.018	343.720	59,64	207.212	69.920	60.854	337.986	147,99	15,61	206.613	54.801	60.391	321.805

Félag háskólakennara

		Karlar					Allir					Konur					
MA	AR	STG	DL	YL	ÖL	HL	STG	DL	YL	ÖL	HL	Km.dl.	STG	DL	YL	ÖL	HL
1	2002	238,08	235.158	86.560	2.729	324.446	468,09	225.035	64.080	1.853	290.968	125,41	230,01	214.557	40.812	946	256.315
2	2002	238,56	233.930	57.071	2.633	293.633	473,58	224.397	49.737	1.904	276.037	125,39	235,03	214.721	42.293	1.164	258.177
3	2002	241,21	234.435	59.976	30.675	325.086	477,91	224.418	55.719	23.525	303.662	124,88	236,70	214.210	51.380	16.240	281.830
4	2002	240,70	233.974	59.544	66.898	360.416	483,97	223.661	49.519	52.216	325.396	124,40	243,27	213.457	39.600	37.690	290.746
5	2002	237,54	234.965	63.453	27.056	325.474	478,97	223.850	54.242	25.480	303.572	124,56	241,43	212.913	45.180	23.930	282.024
6	2002	248,10	232.067	51.324	86.590	369.980	495,63	221.564	43.666	65.650	330.879	123,24	247,53	211.036	35.990	44.661	291.687
7	2002	248,73	232.554	40.526	7.025	280.105	490,52	222.629	36.354	6.098	265.081	123,24	241,79	212.419	32.063	5.144	249.626
8	2002	252,34	232.588	48.849	3.327	284.764	491,17	223.121	42.008	2.172	267.300	124,18	238,84	213.118	34.780	951	248.850
9	2002	246,26	235.769	75.267	3.347	314.384	483,33	226.096	61.942	2.708	290.746	125,19	237,08	216.049	48.100	2.044	266.193
10	2002	249,69	237.568	69.300	3.479	310.348	487,45	227.240	58.940	3.596	289.775	125,17	237,76	216.392	48.060	3.718	268.170
11	2002	244,32	236.885	74.795	3.110	314.789	485,81	226.400	61.710	2.960	291.070	124,93	241,49	215.793	48.472	2.808	267.073
12	2002	249,01	235.621	71.940	37.248	344.808	485,80	226.653	64.417	38.141	329.212	124,99	236,79	217.223	56.507	39.081	312.811

Félag háskólakennara á Akureyri

Kaupmáttur miðast við 05/1992 = 100,00

		Karlur					Allir						Konur				
MA	AR	STG	DL	YL	ÖL	HL	STG	DL	YL	ÖL	HL	Km.dl.	STG	DL	YL	ÖL	HL
1	2002	37,85	243.695	81.787	0	325.482	76,72	230.102	59.357	1.237	290.696	172,74	38,87	216.863	37.513	2.441	256.817
2	2002	37,50	245.228	98.883	0	344.111	76,86	230.348	76.474	1.235	308.057	173,40	39,36	216.168	55.120	2.411	273.698
3	2002	37,44	245.191	79.489	0	324.679	75,82	231.012	58.101	1.277	290.390	173,17	38,38	217.180	37.236	2.522	256.938
4	2002	37,44	245.191	87.152	9.398	341.741	74,63	232.037	63.511	11.657	307.205	173,87	37,19	218.795	39.711	13.930	272.437
5	2002	38,44	243.467	103.249	6.435	353.151	77,00	230.600	75.579	3.212	309.392	172,86	38,56	217.774	47.995	0	265.769
6	2002	39,04	243.932	109.014	2.347	355.293	78,54	231.081	91.812	2.038	324.932	172,48	39,50	218.382	74.812	1.733	294.927
7	2002	39,04	243.379	66.272	0	309.651	77,24	230.472	46.632	0	277.104	171,87	38,20	217.282	26.563	0	243.845
8	2002	42,00	241.075	96.260	0	337.335	84,56	226.876	75.600	0	302.477	170,11	42,56	212.866	55.214	0	268.080
9	2002	43,18	240.836	77.376	0	318.211	85,64	228.618	64.413	0	293.031	170,53	42,46	216.193	51.230	0	267.423
10	2002	42,00	243.460	69.914	0	313.374	83,81	229.999	59.272	0	289.271	170,67	41,81	216.476	48.583	0	265.058
11	2002	42,00	243.492	89.892	1.178	334.562	84,32	229.963	66.930	821	297.714	170,95	42,32	216.535	44.141	468	261.144
12	2002	41,58	244.159	75.184	33.314	352.656	83,75	230.220	59.526	34.093	323.839	171,02	42,17	216.477	44.088	34.860	295.426

Fél. háskólamenntaðra starfsmanna stjórnarráðs

		Karlur					Allir						Konur				
MA	AR	STG	DL	YL	ÖL	HL	STG	DL	YL	ÖL	HL	Km.dl.	STG	DL	YL	ÖL	HL
1	2002	139,52	241.041	57.616	6.033	304.690	300,51	236.146	55.458	4.466	296.070	147,81	160,99	231.904	53.588	3.108	288.600
2	2002	138,58	243.273	58.692	6.576	308.542	300,08	236.513	56.306	5.083	297.902	148,44	161,50	230.713	54.258	3.801	288.771
3	2002	141,19	242.045	57.662	6.955	306.661	302,71	235.798	55.675	5.262	296.735	147,37	161,52	230.338	53.938	3.781	288.057
4	2002	141,94	243.640	60.697	16.423	320.760	300,87	237.021	57.996	14.875	309.892	148,07	158,93	231.110	55.583	13.492	300.185
5	2002	137,71	245.371	65.467	7.297	318.136	301,77	238.138	65.123	5.338	308.599	148,83	164,06	232.066	64.835	3.694	300.595
6	2002	140,94	248.471	57.292	12.372	318.135	304,38	240.075	57.326	8.305	305.705	149,40	163,44	232.835	57.354	4.797	294.986
7	2002	139,76	249.824	57.814	9.874	317.513	304,15	240.622	57.805	6.434	304.860	149,61	164,39	232.798	57.796	3.509	294.103
8	2002	144,37	251.321	57.979	9.686	318.986	312,46	241.390	54.738	5.972	302.100	150,90	168,09	232.860	51.954	2.782	287.596
9	2002	142,87	250.341	61.679	9.784	321.804	312,01	241.156	56.899	6.085	304.139	149,98	169,13	233.396	52.861	2.960	289.218
10	2002	142,31	250.865	61.229	11.409	323.504	314,43	242.655	56.559	6.939	306.152	150,13	172,12	235.866	52.697	3.243	291.807
11	2002	141,27	252.366	59.609	14.693	326.667	315,89	244.146	55.429	8.976	308.552	151,32	174,62	237.497	52.048	4.352	293.897
12	2002	140,51	251.565	66.314	50.269	368.148	312,70	244.075	60.873	44.735	349.683	151,17	172,19	237.964	56.433	40.219	334.616

Félag íslenskra fræða

MA	AR	Karlar				
		STG	DL	YL	ÖL	HL
1	2002	19,83	224.343	20.039	493	244.875
2	2002	19,75	225.236	27.538	495	253.268
3	2002	19,69	225.144	41.537	496	267.177
4	2002	20,90	223.915	17.593	10.128	251.637
5	2002	18,64	225.997	26.596	524	253.118
6	2002	20,12	220.820	32.577	486	253.883
7	2002	20,70	222.327	32.246	472	255.046
8	2002	19,98	225.561	16.776	489	242.827
9	2002	19,93	226.547	38.601	490	265.639
10	2002	17,95	225.903	16.820	544	243.267
11	2002	17,61	227.681	21.484	555	249.720
12	2002	18,11	228.119	35.708	38.798	302.625

Félag íslenskra hjúkrunarfræðinga

MA	AR	Karlar				
		STG	DL	YL	ÖL	HL
1	2002	21,72	207.184	87.838	30.910	325.933
2	2002	19,86	212.010	86.074	41.701	339.785
3	2002	20,23	214.918	107.720	42.605	365.244
4	2002	19,48	217.293	103.130	49.247	369.669
5	2002	19,50	217.958	100.792	43.459	362.209
6	2002	22,51	218.504	76.096	41.152	335.752
7	2002	22,25	215.863	90.205	32.995	339.063
8	2002	23,78	212.300	113.377	40.028	365.705
9	2002	25,00	213.481	79.350	35.127	327.958
10	2002	22,41	216.220	101.354	39.948	357.521
11	2002	25,17	214.715	88.700	46.266	349.681
12	2002	24,40	214.849	86.619	81.413	382.882

Allir					
STG	DL	YL	ÖL	HL	Km.dl.
40,84	222.706	16.491	239	239.436	135,36
39,65	224.533	19.552	247	244.332	136,84
40,15	223.670	25.359	243	249.273	135,74
41,41	223.585	12.551	10.041	246.177	135,63
40,84	225.372	15.813	239	241.425	136,77
43,89	222.129	25.037	362	247.528	134,23
44,84	222.769	23.250	325	246.343	134,50
43,92	223.811	13.208	223	237.242	135,86
44,55	225.989	25.180	219	251.388	136,47
43,80	223.721	12.888	223	236.833	134,40
44,08	225.023	21.240	222	246.485	135,43
46,04	224.127	22.029	33.283	279.439	134,80

Konur					
STG	DL	YL	ÖL	HL	
21,01	221.160	13.142	0	234.302	
19,90	223.837	11.628	0	235.464	
20,46	222.252	9.788	0	232.041	
20,51	223.250	7.413	9.952	240.614	
22,20	224.848	6.759	0	231.607	
23,77	223.237	18.652	257	242.146	
24,14	223.147	15.538	198	238.883	
23,94	222.350	10.230	0	232.580	
24,62	225.537	14.316	0	239.853	
25,85	222.206	10.157	0	232.363	
26,47	223.255	21.077	0	244.332	
27,94	221.540	13.165	29.709	264.413	

Félag íslenskra náttúrufræðinga

MA	AR	<i>Karlar</i>					<i>Allir</i>						<i>Konur</i>				
		STG	DL	YL	ÖL	HL	STG	DL	YL	ÖL	HL	Km.dl.	STG	DL	YL	ÖL	HL
1	2002	347,28	241.973	34.300	3.511	279.784	566,16	233.090	30.896	3.951	267.937	152,27	218,88	218.996	25.495	4.649	249.140
2	2002	353,40	244.404	41.680	5.542	291.625	571,31	236.888	35.282	5.176	277.346	155,18	217,90	224.698	24.907	4.582	254.186
3	2002	354,37	243.700	54.891	6.996	305.587	578,71	236.491	45.132	7.070	288.693	154,27	224,33	225.103	29.716	7.188	262.007
4	2002	348,84	245.610	52.918	37.328	335.856	574,50	237.980	46.402	32.330	316.712	155,17	225,66	226.185	36.331	24.603	287.118
5	2002	356,13	246.210	58.619	5.439	310.268	580,49	238.702	49.395	5.523	293.620	155,71	224,37	226.784	34.755	5.656	267.195
6	2002	361,89	244.699	46.668	4.775	296.142	603,46	235.467	38.676	5.747	279.890	152,94	241,57	221.637	26.703	7.203	255.543
7	2002	362,90	246.850	57.196	5.380	309.425	604,54	237.345	46.540	5.717	289.601	154,02	241,64	223.070	30.537	6.222	259.829
8	2002	360,63	247.745	56.239	7.359	311.342	593,98	238.270	48.320	7.539	294.129	155,46	233,35	223.628	36.083	7.817	267.528
9	2002	346,04	250.740	55.120	5.066	310.926	559,32	242.873	47.144	5.276	295.292	157,65	213,27	230.108	34.203	5.615	269.927
10	2002	347,50	251.107	56.574	5.426	313.108	563,64	243.504	46.144	5.578	295.225	157,24	216,14	231.279	29.374	5.821	266.474
11	2002	344,12	251.185	48.781	5.815	305.781	561,06	244.064	43.862	5.772	293.699	157,88	216,94	232.769	36.059	5.704	274.532
12	2002	356,12	252.554	59.805	42.709	355.068	580,82	244.940	53.598	43.595	342.133	158,34	224,70	232.873	43.762	44.998	321.633

Stéttarfélag sjúkráþjálfa

MA	AR	<i>Karlar</i>					<i>Allir</i>						<i>Konur</i>				
		STG	DL	YL	ÖL	HL	STG	DL	YL	ÖL	HL	Km.dl.	STG	DL	YL	ÖL	HL
1	2002						51,66	210.997	41.307	6.673	258.977	130,36					
2	2002						52,05	211.830	42.529	6.733	261.092	131,24					
3	2002						52,07	211.898	47.909	6.617	266.424	130,72					
4	2002						52,11	212.343	45.505	16.808	274.656	130,94					
5	2002						53,53	212.684	43.043	6.970	262.697	131,21					
6	2002						52,84	213.428	41.914	7.230	262.573	131,10					
7	2002						56,15	209.069	36.414	5.933	251.415	128,31					
8	2002						52,68	212.120	41.460	7.509	261.090	130,89					
9	2002						47,50	215.238	42.411	8.676	266.325	132,13					
10	2002						47,80	238.597	26.668	7.609	272.874	145,71					
11	2002						48,10	238.486	25.628	6.900	271.013	145,90					
12	2002						48,65	239.992	26.022	47.064	313.078	146,72					

Félag tækniskólakennara

MA	AR	Karlar				
		STG	DL	YL	ÖL	HL
1	2002	26,16	254.384	122.461	0	376.846
2	2002	26,08	256.860	91.205	0	348.065
3	2002	25,64	255.832	82.988	0	338.820
4	2002	25,64	257.597	83.156	9.743	350.497
5	2002	26,04	258.104	146.284	6.079	410.468
6	2002	26,04	260.444	47.303	0	307.748
7	2002	26,04	260.991	22.136	0	283.126
8	2002	27,50	259.840	18.004	0	277.844
9	2002	28,13	258.465	116.069	0	374.534
10	2002	27,23	260.556	141.943	0	402.499
11	2002	28,51	257.743	155.369	0	413.112
12	2002	28,52	259.236	172.417	36.314	467.967

Félag íslenskra. félagsvísindamanna

MA	AR	Karlar				
		STG	DL	YL	ÖL	HL
1	2002	15,30	231.306	37.583	6.788	275.676
2	2002	13,36	230.151	37.900	7.772	275.823
3	2002	13,30	233.302	38.907	7.809	280.017
4	2002	13,99	232.152	41.766	17.968	291.886
5	2002	15,78	232.844	40.751	3.292	276.887
6	2002	14,30	239.934	43.331	7.513	290.777
7	2002	14,80	240.483	41.810	7.018	289.311
8	2002	14,80	240.483	42.858	7.018	290.359
9	2002	15,80	232.435	40.189	6.573	279.197
10	2002	15,50	239.645	45.140	6.701	291.486
11	2002	15,69	239.233	38.803	6.619	284.656
12	2002	16,59	241.603	52.451	43.921	337.976

Allir					
STG	DL	YL	ÖL	HL	Km.dl.
45,81	246.524	112.157	0	358.680	168,07
45,89	247.832	76.325	0	324.157	169,42
43,08	249.924	80.408	0	330.332	170,13
43,95	250.016	84.734	10.126	344.875	170,13
44,35	250.382	154.636	3.690	408.708	170,45
44,40	251.637	43.988	0	295.625	170,57
45,60	251.035	28.277	0	279.312	170,01
47,22	250.164	19.126	0	269.290	170,34
47,41	248.891	96.153	0	345.044	168,60
46,90	249.450	107.593	0	357.042	168,10
48,18	248.080	122.698	0	370.779	167,47
48,75	250.474	124.439	35.347	410.260	168,97

Allir					
STG	DL	YL	ÖL	HL	Km.dl.
39,74	227.161	36.356	11.558	275.076	155,64
39,32	227.291	34.429	9.391	271.111	156,16
38,49	231.788	35.973	8.094	275.856	158,58
40,45	230.977	37.466	19.731	288.174	157,96
43,06	232.952	40.603	9.207	282.762	159,37
40,97	237.730	39.255	8.726	285.711	161,95
42,33	237.237	38.958	9.081	285.276	161,47
41,41	237.528	50.469	6.936	294.933	162,54
42,55	238.324	39.763	8.498	286.586	162,25
44,44	243.116	42.383	10.055	295.554	164,65
45,48	241.868	46.863	9.074	297.805	164,10
47,87	244.109	52.528	41.868	338.505	165,51

Konur				
STG	DL	YL	ÖL	HL
19,65	236.059	98.439	0	334.497
19,81	235.946	56.736	0	292.682
17,44	241.238	76.615	0	317.853
18,31	239.399	86.943	10.661	337.003
18,31	239.399	166.514	292	406.205
18,36	239.145	39.286	0	278.430
19,56	237.781	36.452	0	274.233
19,72	236.671	20.690	0	257.361
19,28	234.923	67.095	0	302.018
19,67	234.075	60.040	0	294.115
19,67	234.075	75.345	0	309.421
20,23	238.120	56.800	33.984	328.904

Konur				
STG	DL	YL	ÖL	HL
24,44	224.567	35.588	14.544	274.699
25,96	225.819	32.642	10.224	268.685
25,19	230.989	34.424	8.245	273.658
26,46	230.356	35.192	20.664	286.212
27,29	233.014	40.517	12.627	286.158
26,67	236.549	37.069	9.376	282.995
27,53	235.492	37.425	10.191	283.108
26,61	235.885	54.703	6.890	297.478
26,75	241.802	39.511	9.635	290.949
28,94	244.975	40.907	11.852	297.733
29,79	243.256	51.108	10.367	304.731
31,28	245.438	52.568	40.780	338.786

BHM, ríkisstarfsmenn

Maí 2003

Kjarafélag iðjubjálfa

		Kjarlar					Konur				
MA	AR	STG	DL	YL	ÖL	HL	STG	DL	YL	ÖL	HL
1	2002	38,30	223.530	37.263	0	260.793	133,45				
2	2002	37,61	222.049	42.897	0	264.946	132,93				
3	2002	37,76	222.130	38.082	0	260.212	132,42				
4	2002	37,62	222.208	37.985	9.836	270.028	132,41				
5	2002	37,81	222.269	39.980	0	262.249	132,50				
6	2002	42,20	221.772	43.556	0	265.328	131,64				
7	2002	40,56	215.132	37.374	0	252.506	127,59				
8	2002	42,45	216.716	34.430	0	251.146	129,22				
9	2002	41,52	221.483	37.984	0	259.467	131,38				
10	2002	42,45	220.311	35.478	455	256.244	130,01				
11	2002	42,54	220.562	48.841	476	269.879	130,39				
12	2002	43,32	221.724	27.179	45.623	294.526	130,99				

Kennarafélag KHÍ

		Kjarlar					Konur				
MA	AR	STG	DL	YL	ÖL	HL	STG	DL	YL	ÖL	HL
1	2002	42,06	227.524	79.374	0	306.898	135,49				
2	2002	41,70	227.707	84.661	0	312.368	135,68				
3	2002	42,19	227.493	83.728	474	311.695	135,05				
4	2002	42,35	227.796	83.335	9.910	321.041	135,01				
5	2002	42,27	227.849	93.769	1.766	323.385	135,39				
6	2002	42,34	227.894	123.015	0	350.909	134,52				
7	2002	40,43	229.865	123.053	0	352.918	135,00				
8	2002	55,16	218.563	91.118	33	309.714	131,35				
9	2002	46,24	228.694	96.246	92	325.032	135,10				
10	2002	44,24	230.700	102.465	96	333.262	135,36				
11	2002	43,74	230.983	104.670	97	335.750	135,52				
12	2002	42,41	231.123	94.144	35.184	360.451	135,43				

Kjarafélag viðskipta- og hagfræðinga

MA	AR	<i>Karlar</i>					
		STG	DL	YL	ÖL	HL	
1	2002	138,59	248.797	87.569	289	336.655	
2	2002	136,70	249.180	93.976	293	343.449	
3	2002	135,12	249.184	93.872	296	343.352	
4	2002	138,49	249.300	95.132	10.037	354.469	
5	2002	136,58	250.818	92.552	357	343.727	
6	2002	137,07	251.131	88.672	292	340.096	
7	2002	143,06	251.524	80.939	301	332.765	
8	2002	143,46	251.910	73.031	279	325.220	
9	2002	141,45	253.153	87.425	283	340.860	
10	2002	143,77	255.765	96.551	408	352.724	
11	2002	143,83	255.180	92.411	278	347.869	
12	2002	146,74	256.222	85.626	41.604	383.453	

<i>Allir</i>						
STG	DL	YL	ÖL	HL	Km.dl.	
224,70	245.129	85.509	267	330.905	147,19	
225,72	245.019	93.189	266	338.474	147,53	
227,50	244.733	89.403	264	334.400	146,74	
230,68	245.267	90.790	9.713	345.770	147,00	
231,01	246.221	89.218	298	335.737	147,63	
234,24	245.705	87.040	256	333.000	146,69	
239,62	246.627	81.944	279	328.850	147,11	
240,99	247.146	76.498	355	323.999	148,22	
242,64	247.897	84.620	247	332.765	147,90	
250,13	249.521	92.306	314	342.142	148,10	
249,34	249.177	86.998	314	336.489	148,16	
254,07	249.469	82.575	37.844	369.888	148,23	

<i>Konur</i>					
STG	DL	YL	ÖL	HL	
86,11	239.225	82.194	232	321.651	
89,03	238.632	91.980	225	330.836	
92,39	238.224	82.868	216	321.308	
92,18	239.208	84.265	9.228	332.700	
94,42	239.571	84.396	212	324.179	
97,17	238.050	84.736	206	322.992	
96,56	239.372	83.432	245	323.050	
97,53	240.138	81.598	466	322.203	
101,19	240.551	80.700	198	321.449	
106,36	241.081	86.568	188	327.837	
105,51	240.993	79.619	363	320.975	
107,33	240.235	78.404	32.703	351.343	

Ljósmeðrafélag Íslands *Kaupmáttur miðast við 01/2000 = 100,00*

MA	AR	<i>Karlar</i>				
		STG	DL	YL	ÖL	HL
1	2002					
2	2002					
3	2002					
4	2002					
5	2002					
6	2002					
7	2002					
8	2002					
9	2002					
10	2002					
11	2002					
12	2002					

<i>Allir</i>					
STG	DL	YL	ÖL	HL	Km.dl.
87,75	201.326	46.829	44.071	292.227	104,63
92,78	201.498	34.830	38.113	274.441	105,01
87,13	203.382	77.247	44.830	325.459	105,54
86,28	204.117	56.098	55.129	315.344	105,88
86,42	204.923	73.371	43.912	322.206	106,34
92,31	205.191	46.811	43.104	295.105	106,02
87,48	205.933	45.204	39.353	290.490	106,31
91,85	205.785	50.790	37.052	293.628	106,81
86,78	206.002	39.094	43.974	289.070	106,37
86,91	206.808	40.019	45.041	291.869	106,24
84,44	207.774	40.742	47.916	296.432	106,92
85,85	208.630	64.315	85.985	358.930	107,29

<i>Konur</i>				
STG	DL	YL	ÖL	HL
87,75	201.326	46.829	44.071	292.227
92,78	201.498	34.830	38.113	274.441
87,13	203.382	77.247	44.830	325.459
86,28	204.117	56.098	55.129	315.344
86,42	204.923	73.371	43.912	322.206
92,31	205.191	46.811	43.104	295.105
87,48	205.933	45.204	39.353	290.490
91,85	205.785	50.790	37.052	293.628
86,78	206.002	39.094	43.974	289.070
86,91	206.808	40.019	45.041	291.869
84,44	207.774	40.742	47.916	296.432
85,85	208.630	64.315	85.985	358.930

Stéttarfélag háskólum á matvæla- og næringasviði

		Karlar					Allir					Konur					
MA	AR	STG	DL	YL	ÖL	HL	STG	DL	YL	ÖL	HL	Km.dl.	STG	DL	YL	ÖL	HL
1	2002	23,12	232.542	50.552	3.129	286.223	57,82	226.069	34.600	3.252	263.921	169,60	34,71	221.758	23.976	3.334	249.068
2	2002	24,49	236.597	52.600	2.954	292.151	58,72	229.100	39.760	2.043	270.903	172,35	34,24	223.738	30.577	1.392	255.707
3	2002	22,63	233.663	51.263	3.197	288.123	58,73	226.591	37.043	3.202	266.836	169,74	36,11	222.159	28.133	3.205	253.497
4	2002	22,37	232.963	57.963	14.138	305.063	60,06	227.398	37.663	13.042	278.103	170,28	37,69	224.095	25.612	12.392	262.099
5	2002	25,01	233.788	46.333	2.893	283.014	64,45	225.636	37.019	2.175	264.830	169,03	39,44	220.467	31.115	1.719	253.301
6	2002	23,15	236.631	36.643	5.237	278.511	61,65	224.216	29.663	4.760	258.639	167,24	38,50	216.754	25.466	4.473	246.693
7	2002	20,44	234.343	47.761	3.538	285.642	57,30	223.764	33.956	3.386	261.106	166,76	36,85	217.896	26.298	3.301	247.495
8	2002	21,67	236.781	47.767	5.621	290.168	57,22	226.652	36.300	5.432	268.384	169,83	35,55	220.476	29.309	5.317	255.101
9	2002	21,66	239.454	47.350	7.671	294.475	54,49	229.913	37.495	5.554	272.961	171,38	32,83	223.617	30.991	4.156	258.764
10	2002	21,66	239.453	53.331	6.758	299.542	56,27	229.523	37.781	3.784	271.087	170,20	34,61	223.307	28.048	1.922	253.278
11	2002	21,67	239.449	49.956	4.944	294.349	55,22	230.282	35.914	3.135	269.331	171,07	33,54	224.359	26.840	1.965	253.164
12	2002	21,95	239.643	70.396	47.684	357.724	55,61	231.268	44.332	46.941	322.541	171,69	33,65	225.803	27.328	46.456	299.588

Meinataeknafélag Íslands *Kaupmáttur miðast við 04/1989 = 100,00*

		Karlar					Allir					Konur					
MA	AR	STG	DL	YL	ÖL	HL	STG	DL	YL	ÖL	HL	Km.dl.	STG	DL	YL	ÖL	HL
1	2002						158,69	193.247	79.096	22.147	294.490	153,96					
2	2002						157,63	193.658	73.811	23.885	291.354	154,71					
3	2002						157,97	193.798	87.468	26.845	308.110	154,17					
4	2002						158,48	193.885	83.514	33.656	311.054	154,18					
5	2002						157,57	193.742	88.414	25.056	307.212	154,13					
6	2002						156,27	194.045	84.363	25.190	303.599	153,71					
7	2002						157,00	194.466	75.266	23.677	293.410	153,91					
8	2002						157,23	194.541	79.502	24.311	298.354	154,80					
9	2002						157,39	194.869	80.282	23.282	298.433	154,26					
10	2002						154,85	194.568	83.897	25.326	303.791	153,22					
11	2002						154,79	194.788	82.530	24.049	301.367	153,67					
12	2002						153,91	195.026	85.185	63.987	344.198	153,75					

Félag íslenskra geislafræðinga

Kaupmáttur miðast við 01/1992 = 100,00

		<i>Karlar</i>					<i>Allir</i>						<i>Konur</i>				
MA	AR	STG	DL	YL	ÖL	HL	STG	DL	YL	ÖL	HL	Km.dl.	STG	DL	YL	ÖL	HL
1	2002						43,77	187.684	80.988	22.665	291.337	175,98					
2	2002						43,26	187.480	73.590	19.456	280.525	176,27					
3	2002						44,06	187.525	92.854	18.277	298.655	175,57					
4	2002						46,23	187.550	76.172	25.660	289.382	175,52					
5	2002						42,81	186.758	90.594	16.366	293.717	174,85					
6	2002						44,57	186.598	89.034	20.305	295.937	173,95					
7	2002						45,40	186.955	77.767	18.471	283.193	174,13					
8	2002						46,17	185.933	83.082	18.497	287.512	174,12					
9	2002						46,75	185.292	78.173	18.357	281.821	172,62					
10	2002						47,20	188.655	69.842	17.697	276.194	174,85					
11	2002						47,55	188.688	69.603	16.793	275.084	175,19					
12	2002						46,46	188.964	77.859	54.606	321.430	175,33					

Stéttarfélag sálfræðinga á Íslandi

		<i>Karlar</i>					<i>Allir</i>						<i>Konur</i>				
MA	AR	STG	DL	YL	ÖL	HL	STG	DL	YL	ÖL	HL	Km.dl.	STG	DL	YL	ÖL	HL
1	2002	18,64	291.365	17.590	0	308.955	50,34	276.298	18.677	2.086	297.062	171,30	31,70	267.434	19.317	3.314	290.065
2	2002	18,73	291.438	16.396	0	307.834	51,44	277.759	15.631	1.837	295.227	172,68	32,71	269.924	15.192	2.889	288.006
3	2002	19,65	291.711	17.525	1.949	311.184	50,35	277.434	18.423	3.635	299.492	171,75	30,70	268.292	18.998	4.715	292.006
4	2002	18,73	295.222	16.429	18.464	330.116	49,96	278.361	18.922	14.994	312.278	172,25	31,23	268.245	20.418	12.913	301.576
5	2002	19,33	293.595	14.155	0	307.750	50,53	278.219	15.801	681	294.701	172,24	31,20	268.695	16.820	1.103	286.618
6	2002	20,24	292.622	11.753	0	304.376	52,11	278.582	14.914	1.118	294.614	171,72	31,87	269.665	16.922	1.828	288.414
7	2002	18,80	296.705	12.287	9.081	318.073	51,60	278.900	14.294	5.161	298.354	171,77	32,80	268.695	15.444	2.914	287.053
8	2002	21,51	295.603	10.473	3.282	309.358	54,22	278.956	12.812	3.229	294.997	172,74	32,71	268.009	14.350	3.194	285.552
9	2002	19,52	288.133	13.319	2.009	303.460	52,57	275.518	15.397	3.960	294.875	169,73	33,05	268.067	16.624	5.113	289.804
10	2002	19,79	287.571	16.664	13.527	317.762	52,79	275.680	16.608	7.938	300.226	168,95	33,00	268.548	16.574	4.585	289.708
11	2002	20,20	292.045	11.780	2.130	305.955	52,06	277.146	16.127	4.646	297.919	170,15	31,86	267.702	18.882	6.241	292.826
12	2002	18,14	288.112	11.550	40.247	339.909	50,30	274.234	11.283	40.710	326.227	168,24	32,16	266.406	11.132	40.971	318.509

Stéttarfélag íslenskra félagsráðgjafa

MA	AR	<i>Karlar</i>					HL
		STG	DL	YL	ÖL	HL	
1	2002						
2	2002						
3	2002						
4	2002						
5	2002						
6	2002						
7	2002						
8	2002						
9	2002						
10	2002						
11	2002						
12	2002						

<i>Allir</i>						Km.dl.
STG	DL	YL	ÖL	HL	HL	
55,50	219.826	32.594	5.544	257.964	158,47	
52,85	218.237	33.248	5.102	256.587	157,75	
53,63	218.666	35.209	4.851	258.725	157,40	
54,69	219.137	35.819	14.969	269.924	157,67	
55,17	221.322	32.354	6.716	260.392	159,31	
57,01	219.094	28.698	5.759	253.551	157,03	
54,26	220.352	27.378	4.742	252.472	157,79	
55,40	218.314	32.397	4.947	255.657	157,18	
55,98	218.068	31.164	6.367	255.598	156,19	
57,18	217.361	31.394	6.370	255.125	154,88	
57,65	216.964	33.054	5.702	255.720	154,87	
58,73	216.526	32.482	40.247	289.254	154,45	

<i>Konur</i>				
STG	DL	YL	ÖL	HL

Stéttarfélag lögfræðinga

MA	AR	<i>Karlar</i>					HL
		STG	DL	YL	ÖL	HL	
1	2002	109,03	233.281	87.297	20.919	341.497	
2	2002	110,21	234.776	92.468	15.580	342.824	
3	2002	107,22	234.529	90.265	12.650	337.444	
4	2002	109,89	234.819	92.056	30.858	357.733	
5	2002	108,47	237.347	104.749	17.716	359.812	
6	2002	111,37	237.623	83.893	14.296	335.812	
7	2002	109,36	238.272	88.050	16.547	342.869	
8	2002	111,86	238.212	87.497	13.034	338.743	
9	2002	109,33	239.021	87.358	15.477	341.857	
10	2002	109,12	240.032	93.419	14.537	347.987	
11	2002	115,10	237.711	87.940	14.660	340.311	
12	2002	113,54	240.059	90.499	52.349	382.907	

<i>Allir</i>						Km.dl.
STG	DL	YL	ÖL	HL	HL	
216,70	228.984	78.084	17.721	324.789	143,11	
223,80	229.012	79.491	12.201	320.703	143,53	
222,91	229.619	77.449	11.837	318.905	143,30	
222,49	229.997	83.058	25.956	339.011	143,48	
223,42	230.062	93.308	13.694	337.064	143,58	
227,24	230.644	78.344	13.593	322.581	143,32	
227,13	230.992	77.808	12.972	321.772	143,41	
226,54	231.700	79.563	12.728	323.991	144,63	
224,57	232.772	81.279	13.595	327.646	144,55	
222,72	233.528	87.333	12.273	333.134	144,27	
230,79	233.079	83.596	12.544	329.219	144,25	
225,06	233.777	85.515	51.342	370.634	144,58	

<i>Konur</i>				
STG	DL	YL	ÖL	HL
107,67	224.634	68.753	14.483	307.870
113,58	223.418	66.898	8.922	299.238
115,69	225.069	65.571	11.085	301.725
112,60	225.291	74.277	21.172	320.741
114,95	223.187	82.511	9.899	315.598
115,87	223.936	73.009	12.917	309.862
117,76	224.231	68.296	9.652	302.179
114,68	225.349	71.823	12.430	309.602
115,24	226.843	75.510	11.810	314.163
113,60	227.280	81.488	10.097	318.866
115,69	228.471	79.275	10.438	318.184
111,52	227.381	80.440	50.317	358.139

Útgarður, félag háskólamanna

MA	AR	Karlar						Allir						Konur				
		STG	DL	YL	ÖL	HL	STG	DL	YL	ÖL	HL	Km.dl.	STG	DL	YL	ÖL	HL	
1	2002	133,90	214.751	70.197	13.739	298.687	299,56	207.614	54.752	7.788	270.154	142,34	165,67	201.845	42.269	2.979	247.092	
2	2002	138,58	215.737	69.247	12.125	297.109	306,01	207.719	53.237	6.887	267.843	142,80	167,43	201.084	39.987	2.551	243.622	
3	2002	137,74	216.594	70.390	12.114	299.098	306,21	207.966	53.028	7.091	268.085	142,37	168,48	200.913	38.834	2.984	242.730	
4	2002	136,84	216.112	77.953	23.748	317.813	307,26	207.846	56.800	18.670	283.316	142,23	170,42	201.209	39.814	14.593	255.616	
5	2002	137,46	216.135	77.412	13.449	306.995	308,39	208.332	56.709	7.375	272.416	142,62	170,92	202.057	40.059	2.490	244.606	
6	2002	141,68	216.358	70.475	11.436	298.269	314,17	208.704	54.017	6.548	269.269	142,26	172,49	202.417	40.498	2.533	245.448	
7	2002	140,00	216.968	65.392	11.090	293.450	313,53	209.710	48.944	5.977	264.630	142,82	173,53	203.854	35.674	1.852	241.380	
8	2002	137,78	218.049	63.369	9.935	291.354	307,15	211.076	46.245	5.823	263.144	144,53	169,37	205.404	32.315	2.478	240.196	
9	2002	137,76	218.987	79.941	10.485	309.412	296,95	213.235	57.379	5.799	276.413	145,26	159,19	208.256	37.854	1.745	247.856	
10	2002	137,31	221.255	74.064	13.811	309.130	301,83	214.384	56.258	9.176	279.818	145,28	164,52	208.650	41.397	5.308	255.354	
11	2002	138,49	220.464	73.737	11.924	306.124	302,17	214.077	56.945	6.873	277.895	145,33	163,68	208.674	42.739	2.598	254.011	
12	2002	139,49	221.901	76.146	50.285	348.332	299,55	215.085	57.245	46.963	319.293	145,92	160,06	209.144	40.773	44.068	293.985	

Proskapjálfafélag Íslands

Kaupmáttur miðast við 07-12/1997 = 100,00

MA	AR	Karlar					Allir						Konur				
		STG	DL	YL	ÖL	HL	STG	DL	YL	ÖL	HL	Km.dl.	STG	DL	YL	ÖL	HL
1	2002						122,49	183.171	70.126	18.059	271.356	125,58					
2	2002						121,54	183.165	52.971	20.644	256.780	125,92					
3	2002						120,77	182.738	52.334	20.376	255.448	125,10					
4	2002						123,68	182.788	65.351	29.544	277.684	125,08					
5	2002						127,36	182.339	59.823	19.923	262.084	124,83					
6	2002						134,84	182.527	50.372	18.084	250.983	124,42					
7	2002						137,90	183.380	43.391	16.526	243.297	124,89					
8	2002						132,28	182.824	42.856	16.604	242.284	125,19					
9	2002						129,14	181.447	45.033	19.028	245.508	123,60					
10	2002						129,91	183.071	46.975	22.666	252.713	124,06					
11	2002						133,18	182.869	51.592	19.349	253.811	124,15					
12	2002						129,95	183.327	49.565	57.794	290.685	124,37					

BHM, ríkisstarfsmenn

Máí 2003

BHM félagin hjá ríkinu, alls

MA	AR	Kerlar				Allir				Konur						
		STG	DL	YL	ÖL	HL	STG	DL	YL	ÖL	HL	STG	DL	YL	ÖL	HL
1	2002	1.396,80	235.939	66.758	6.794	309.491	4.262,03	218.477	61.522	14.261	294.261	2.865,25	209.964	58.970	17.902	286.636
2	2002	1.404,30	237.090	63.546	7.415	308.050	4.302,23	219.346	56.988	13.605	289.938	2.897,94	210.747	53.810	16.605	281.161
3	2002	1.401,63	237.306	67.312	12.590	317.208	4.301,14	219.895	67.054	17.654	304.602	2.899,53	211.478	66.928	20.101	298.508
4	2002	1.404,19	237.828	69.562	32.897	340.287	4.311,35	220.320	63.486	31.452	315.258	2.907,16	211.863	60.551	30.754	303.169
5	2002	1.408,68	238.561	73.948	12.107	324.616	4.330,81	220.904	68.469	17.370	306.744	2.922,14	212.393	65.828	19.908	298.128
6	2002	1.441,28	237.689	63.206	22.067	322.962	4.421,92	220.279	58.265	21.018	299.562	2.980,64	211.860	55.876	20.511	288.246
7	2002	1.443,97	238.419	61.097	8.147	307.663	4.413,79	220.851	54.984	12.865	288.700	2.969,81	212.309	52.012	15.158	279.479
8	2002	1.475,28	238.569	62.418	7.865	308.853	4.435,45	221.302	56.750	13.344	291.396	2.960,18	212.697	53.925	16.074	282.696
9	2002	1.432,31	240.662	70.440	7.811	318.914	4.354,51	222.806	59.528	14.374	296.708	2.922,20	214.054	54.179	17.591	285.824
10	2002	1.427,31	242.281	71.678	8.570	322.530	4.367,62	223.866	60.802	15.183	299.851	2.940,32	214.926	55.522	18.393	288.841
11	2002	1.427,33	241.982	70.767	8.694	321.442	4.391,18	223.953	61.223	15.081	300.258	2.963,85	215.271	56.627	18.156	290.055
12	2002	1.444,38	242.484	72.696	45.315	360.494	4.403,13	224.649	65.690	52.130	342.469	2.958,75	215.942	62.270	55.457	333.670

3.3 Kennarasamband Íslands, ríkisstarfsmenn

Kennarasamband Íslands, ríkisstarfsmenn

MA	AR	Kartar					Allir					Konur					
		STG	DL	YL	ÖL	HL	STG	DL	YL	ÖL	HL	Km.dl.	STG	DL	YL	ÖL	HL
1	2002	699,85	222.347	97.238	187	319.772	1.321,20	219.915	75.872	208	295.994	159,34	621,35	217.174	51.806	231	269.212
2	2002	695,24	222.741	114.937	365	338.043	1.303,27	220.419	90.043	596	311.059	160,14	608,03	217.765	61.579	860	280.204
3	2002	694,44	223.036	119.030	404	342.471	1.302,19	220.800	95.349	368	316.517	159,74	607,75	218.246	68.289	327	286.862
4	2002	695,27	223.046	107.067	9.972	340.085	1.306,24	220.842	84.329	10.084	315.256	159,70	610,97	218.335	58.453	10.212	287.000
5	2002	692,91	223.409	109.582	415	333.406	1.300,72	221.135	90.038	482	311.655	159,98	607,81	218.543	67.757	559	286.858
6	2002	693,48	223.564	29.635	582	253.781	1.303,45	221.342	28.492	541	250.374	159,45	609,97	218.815	27.192	494	246.501
7	2002	677,48	224.224	7.106	31	231.361	1.277,26	221.977	6.448	36	228.461	159,76	599,78	219.439	5.705	43	225.186
8	2002	694,43	225.192	42.118	138	267.448	1.323,90	222.676	32.732	108	255.516	161,14	629,47	219.901	22.378	74	242.354
9	2002	688,38	225.359	153.660	304	379.322	1.314,63	222.577	121.429	301	344.307	160,23	626,24	219.520	86.000	299	305.818
10	2002	689,89	225.000	119.372	406	344.779	1.311,22	222.496	97.400	614	320.510	159,34	621,33	219.715	73.004	844	293.564
11	2002	690,39	224.972	130.841	385	356.198	1.310,50	222.515	107.482	505	330.502	159,64	620,11	219.780	81.476	639	301.894
12	2002	687,48	225.241	139.827	36.557	401.625	1.308,19	222.637	116.720	36.431	375.789	159,62	620,71	219.754	91.128	36.292	347.174

Félag íslenskra flugumferðarstjóra

MA	AR	Karlar				
		STG	DL	YL	ÖL	HL
1	2002	81,00	283.748	109.472	101.464	494.684
2	2002	82,44	322.297	74.317	139.288	535.901
3	2002	82,51	321.364	180.498	152.242	654.104
4	2002	81,54	322.280	202.404	165.443	690.127
5	2002	82,51	322.055	176.228	149.430	647.714
6	2002	82,77	322.806	180.044	151.881	654.731
7	2002	82,31	324.077	159.814	149.386	633.277
8	2002	80,90	323.851	173.516	154.120	651.487
9	2002	81,11	324.301	129.540	146.141	599.982
10	2002	82,75	325.044	121.458	148.047	594.549
11	2002	81,57	324.019	126.297	151.997	602.313
12	2002	81,35	324.432	116.441	189.696	630.570

STG	DL	YL	ÖL	HL	Km.dl.
102,29	271.675	101.630	96.245	469.550	201,68
104,22	308.512	62.029	131.870	502.411	229,65
104,16	307.730	166.144	144.350	618.224	228,10
103,19	308.325	190.706	157.552	656.584	228,45
104,16	308.277	156.526	141.477	606.281	228,51
105,54	308.255	159.127	142.897	610.278	227,51
106,96	307.408	145.266	140.796	593.470	226,69
105,55	307.020	158.722	144.804	610.545	227,63
105,76	307.761	117.910	137.350	563.021	227,00
106,40	308.687	108.933	140.081	557.700	226,50
105,22	307.787	115.794	143.960	567.541	226,25
105,00	308.073	105.401	181.887	595.361	226,30

STG	DL	YL	ÖL	HL
21,29	225.740	71.794	76.392	373.926
21,78	256.331	15.519	103.796	375.646
21,65	255.768	111.440	114.273	481.481
21,65	255.768	146.650	127.833	530.252
21,65	255.768	81.442	111.168	448.378
22,77	255.358	83.092	110.238	448.688
24,65	251.747	96.689	112.113	460.549
24,65	251.782	110.167	114.228	476.177
24,65	253.339	79.641	108.423	441.403
23,65	251.453	65.109	112.209	428.771
23,65	251.799	79.570	116.239	447.609
23,65	251.799	67.424	155.027	474.250

Kjarafélag Tæknifræðingafélags Íslands

MA	AR	Karlar				
		STG	DL	YL	ÖL	HL
1	2002	123,86	250.918	96.010	11.496	358.423
2	2002	125,77	251.091	101.092	13.456	365.639
3	2002	123,64	250.693	105.912	15.327	371.932
4	2002	126,00	250.877	96.000	26.390	373.267
5	2002	124,51	251.146	100.253	12.043	363.442
6	2002	125,16	252.113	104.848	12.789	369.751
7	2002	126,00	251.276	91.827	14.154	357.257
8	2002	125,79	251.442	103.990	12.481	367.913
9	2002	126,93	251.092	98.301	13.621	363.013
10	2002	124,99	251.721	116.060	13.897	381.678
11	2002	125,22	251.815	105.049	11.470	368.334
12	2002	124,63	251.036	104.612	52.671	408.319

STG	DL	YL	ÖL	HL	Km.dl.
125,86	250.356	95.826	11.313	357.494	153,84
127,77	250.534	101.001	13.246	364.781	154,37
126,64	249.874	105.062	14.964	369.900	153,32
129,00	250.069	95.476	25.924	371.469	153,37
127,51	250.322	99.093	11.759	361.174	153,59
128,16	251.270	103.755	12.490	367.516	153,51
129,00	250.458	90.876	13.825	355.159	152,88
128,79	250.619	102.876	12.190	365.686	153,81
129,93	250.284	97.632	13.306	361.223	152,81
127,99	250.886	115.111	13.571	379.569	152,38
128,22	250.980	104.313	11.202	366.495	152,71
127,63	250.215	104.426	52.223	406.864	152,14

STG	DL	YL	ÖL	HL
2,00	215.550	84.416	0	299.966
2,00	215.550	95.268	0	310.818
3,00	216.113	70.045	0	286.158
3,00	216.113	73.479	6.353	295.945
3,00	216.113	50.929	0	267.042
3,00	216.113	58.163	0	274.276
3,00	216.113	50.929	0	267.042
3,00	216.113	56.190	0	272.303
3,00	216.113	69.344	0	285.457
3,00	216.113	75.593	0	291.706
3,00	216.113	73.620	0	289.733
3,00	216.113	96.693	33.600	346.406

Leikarafélag Íslands

Kaupmáttur miðast við meðaltal ársins 1997 = 100,00

Karlar

MA	AR	STG	DL	YL	ÖL	HL
1	2002	22,73	235.816	43.315	8.484	287.614
2	2002	22,73	240.200	31.686	6.658	278.544
3	2002	22,73	222.572	17.648	4.770	244.989
4	2002	22,73	228.212	15.627	16.510	260.349
5	2002	22,73	236.287	21.906	6.370	264.562
6	2002	20,97	214.651	8.200	2.521	225.372
7	2002	18,00	202.189	0	0	202.189
8	2002	18,39	201.056	0	0	201.056
9	2002	19,61	198.886	7.528	977	207.391
10	2002	20,11	239.363	17.190	6.600	263.152
11	2002	22,60	228.932	33.365	6.447	268.744
12	2002	25,09	203.062	15.274	32.927	251.262

Læknafélag Íslands, sjúkrahúslæknar**Karlar**

MA	AR	STG	DL	YL	ÖL	HL
1	2002	375,10	335.652	101.297	103.591	540.540
2	2002	365,86	339.626	92.385	97.443	529.454
3	2002	372,99	356.933	102.671	113.582	573.186
4	2002	360,68	432.623	134.528	167.214	734.364
5	2002	370,04	420.745	133.653	200.903	755.302
6	2002	390,18	380.171	122.980	141.417	644.568
7	2002	379,13	387.760	130.430	141.591	659.781
8	2002	370,16	398.875	125.810	156.702	681.388
9	2002	368,62	411.279	124.050	146.162	681.491
10	2002	366,27	395.497	120.457	151.949	667.904
11	2002	349,27	413.442	131.178	153.484	698.104
12	2002	350,38	420.871	139.077	200.813	760.761

Allir

STG	DL	YL	ÖL	HL	Km.dl.
46,24	217.429	31.845	6.105	255.378	131,57
48,50	220.510	24.857	5.257	250.624	133,80
48,32	212.835	17.893	4.858	235.586	128,60
45,65	229.877	19.159	16.750	265.786	138,84
45,65	230.035	17.142	5.909	253.085	138,99
42,34	210.271	5.589	2.420	218.281	126,51
34,00	199.409	0	0	199.409	119,87
35,56	197.272	2.952	69	200.294	119,22
41,16	193.542	6.594	1.290	201.426	116,37
40,57	233.758	14.506	6.262	254.526	139,82
45,94	217.427	24.602	5.498	247.527	130,28
50,17	195.423	13.561	31.941	240.925	117,02

Allir

STG	DL	YL	ÖL	HL	Km.dl.
506,92	321.307	104.794	95.751	521.851	145,98
495,77	323.969	95.387	89.751	509.106	147,59
509,68	335.129	106.597	103.272	544.998	152,03
498,37	418.592	136.504	147.171	702.267	189,81
505,94	402.084	137.324	182.618	722.026	182,40
531,79	367.491	128.895	128.129	624.515	166,00
511,80	371.664	133.786	128.235	633.685	167,73
507,17	379.113	132.469	137.600	649.182	172,02
497,19	396.030	129.290	133.897	659.217	178,77
496,72	381.302	130.990	137.476	649.768	171,23
476,42	399.988	137.048	138.670	675.706	179,94
480,13	401.408	141.151	184.485	727.044	180,46

Konur

STG	DL	YL	ÖL	HL
23,51	199.648	20.752	3.804	224.205
25,77	203.143	18.833	4.022	225.997
25,59	204.187	18.110	4.936	227.234
22,91	231.529	22.662	16.989	271.180
22,91	223.833	12.417	5.451	241.701
21,38	205.975	3.028	2.322	211.325
16,00	196.280	0	0	196.280
17,17	193.220	6.114	144	199.478
21,55	188.680	5.743	1.575	195.998
20,47	228.252	11.869	5.929	246.050
23,34	206.290	16.119	4.579	226.989
25,09	187.785	11.849	30.955	230.588

Konur

STG	DL	YL	ÖL	HL
131,82	280.487	114.742	73.441	468.671
129,91	279.874	103.840	68.086	451.799
136,69	275.631	117.311	75.139	468.081
137,69	381.836	141.681	94.668	618.185
135,90	351.269	147.321	132.829	631.418
141,60	332.553	145.196	91.512	569.260
132,67	325.668	143.376	90.067	559.111
137,01	325.722	150.457	85.994	562.173
128,57	352.310	144.313	98.731	595.355
130,45	341.445	160.562	96.838	598.845
127,15	363.030	153.173	97.977	614.181
129,75	348.850	146.753	140.389	635.992

Starfsmannafélag Sinfóníuhljómshv. Ísl.

		<i>Karlar</i>					
MA	AR	STG	DL	YL	ÖL	HL	
1	2002	38,41	229.338	15.222	0	244.561	
2	2002	39,33	228.625	4.300	0	232.926	
3	2002	39,15	239.775	17.394	511	257.679	
4	2002	38,91	225.540	4.334	9.764	239.637	
5	2002	39,04	228.550	24.012	0	252.562	
6	2002	39,17	230.667	6.815	0	237.482	
7	2002	38,50	225.075	2.765	0	227.840	
8	2002	38,50	225.111	2.765	0	227.876	
9	2002	40,82	224.124	4.239	0	228.363	
10	2002	41,20	230.555	4.122	0	234.677	
11	2002	43,82	228.422	6.503	0	234.926	
12	2002	40,32	228.448	10.008	36.512	274.969	

Stéttarfélag verkfræðinga

		<i>Karlar</i>					
MA	AR	STG	DL	YL	ÖL	HL	
1	2002	175,43	261.554	98.890	12.393	372.837	
2	2002	175,93	260.695	100.942	8.950	370.588	
3	2002	177,05	261.941	106.802	10.117	378.860	
4	2002	173,04	262.195	107.774	34.092	404.061	
5	2002	174,82	263.316	103.416	14.220	380.952	
6	2002	175,91	262.403	103.786	13.409	379.598	
7	2002	178,68	261.973	96.509	16.113	374.595	
8	2002	181,69	262.555	96.969	18.127	377.651	
9	2002	172,83	264.803	110.701	14.695	390.198	
10	2002	171,90	266.376	116.779	15.634	398.789	
11	2002	172,83	266.314	110.191	16.510	393.016	
12	2002	172,33	266.938	114.902	49.508	431.347	

<i>Allir</i>						
STG	DL	YL	ÖL	HL	Km.dl.	
79,91	224.095	19.202	0	243.297	163,57	
82,88	223.712	4.779	0	228.491	163,74	
80,29	229.902	16.058	498	246.458	167,56	
79,18	222.309	4.527	9.916	236.752	161,96	
79,56	224.539	22.593	0	247.132	163,65	
80,72	224.981	6.722	0	231.703	163,27	
79,00	222.033	2.848	0	224.881	160,99	
78,99	222.047	2.849	0	224.895	161,87	
79,41	221.802	4.159	0	225.962	160,86	
80,36	225.583	5.334	0	230.917	162,76	
84,45	224.636	6.304	0	230.940	162,36	
80,39	224.739	9.169	37.432	271.340	162,33	

<i>Konur</i>					
STG	DL	YL	ÖL	HL	
41,50	219.242	22.885	0	242.127	
43,55	219.275	5.212	0	224.487	
41,13	220.505	14.787	486	235.778	
40,27	219.187	4.714	10.063	233.964	
40,52	220.674	21.226	0	241.899	
41,55	219.621	6.634	0	226.255	
40,50	219.141	2.928	0	222.068	
40,49	219.132	2.928	0	222.061	
38,59	219.347	4.075	0	223.422	
39,16	220.352	6.609	0	226.961	
40,63	220.553	6.088	0	226.642	
40,07	221.007	8.325	38.358	267.689	

<i>Konur</i>					
STG	DL	YL	ÖL	HL	
27,94	248.931	69.933	4.404	323.268	
26,94	250.638	65.854	4.041	320.533	
27,72	249.966	71.613	4.219	325.799	
27,25	252.585	74.715	31.424	358.724	
27,45	253.129	74.000	3.821	330.950	
27,45	253.568	63.990	5.822	323.380	
28,29	252.884	72.488	4.935	330.308	
29,90	249.798	58.316	3.464	311.578	
29,30	250.850	68.401	2.555	321.805	
27,78	253.212	77.285	6.211	336.708	
27,56	255.684	79.034	3.751	338.469	
27,72	256.373	74.417	41.349	372.138	

Ýmsir, ríkisstarfsmenn

Kjaranefnd heilsgæslulaeknar *Kaupmáttur miðast við meðaltal ársins 1997 = 100,00. Ath. Samkvæmt úrskurði kjaranefndar um laun og starfskjör heilsgæslulekna þann 15. október 2002 falla allar greiðslur frá Tryggingastofnun ríkisins til heilsgæslulekna niður.*

		Allir										Konur					
MA	AR	STG	DL	YL	ÖL	HL	STG	DL	YL	ÖL	HL	STG	DL	YL	ÖL	HL	
1	2002	79,83	331,099	2.170	168.148	501.417	109,42	320.793	1.812	156.200	478.804	208,34	29,59	292.988	845	123.965	417.798
2	2002	80,25	330,030	3.022	154.607	487.659	109,02	320.967	2.224	143.914	467.105	209,03	28,78	295.692	0	114.093	409.785
3	2002	82,90	328.299	1.625	160.231	490.155	111,36	321.839	1.210	148.301	471.349	208,71	28,47	303.027	0	113.560	416.586
4	2002	81,26	440.763	2.085	162.845	605.694	108,12	432.175	1.567	152.304	586.047	280,15	26,86	406.194	0	120.417	526.611
5	2002	83,10	448.100	3.303	163.207	614.610	111,37	438.964	2.464	155.780	597.208	284,67	28,27	412.110	0	133.946	546.056
6	2002	92,53	473.628	5.480	161.320	640.427	127,82	468.571	4.084	151.252	613.908	296,11	35,29	419.095	425	124.857	544.377
7	2002	95,01	441.067	6.784	151.249	599.101	130,81	426.551	7.078	141.835	575.464	275,19	35,80	388.024	7.858	116.849	512.731
8	2002	90,41	448.642	9.355	159.987	617.985	123,46	432.324	6.759	148.818	587.901	280,43	33,05	387.680	-341	118.262	505.601
9	2002	83,41	473.584	4.850	173.533	651.966	113,51	454.509	1.685	163.952	620.146	293,30	30,10	401.652	-7.084	137.403	531.971
10	2002	81,88	471.276	1.611	170.755	643.643	110,23	460.496	1.197	160.936	622.629	295,62	28,35	429.363	0	132.581	561.943
11	2002	82,80	511.102	38.079	154.836	704.017	110,71	495.562	38.053	133.646	667.261	318,70	27,92	449.474	37.976	70.799	558.249
12	2002	86,75	505.761	37.741	180.248	723.750	113,00	497.416	39.876	174.448	711.741	319,68	26,25	469.838	46.933	155.281	672.052

Mínustölur í öðrum launum stafa af leiðréttingarfærslum.

Kjaranefnd prófessorar

Kaupmáttur miðast við meðaltal ársins 1997 = 100,00

		Allir										Konur					
MA	AR	STG	DL	YL	ÖL	HL	STG	DL	YL	ÖL	HL	STG	DL	YL	ÖL	HL	
1	2002	157,35	338.391	40.872	20.012	399.274	185,72	335.730	40.643	20.666	397.039	180,75	28,37	320.975	39.376	24.294	384.645
2	2002	152,12	338.872	40.292	21.514	400.678	180,49	336.059	41.099	20.723	397.881	181,43	28,37	320.975	45.426	16.482	382.884
3	2002	156,01	338.489	37.373	23.483	399.345	185,38	335.473	42.633	25.236	403.341	180,35	29,37	319.452	70.570	34.548	424.570
4	2002	156,29	337.819	41.362	22.123	401.305	185,66	334.914	42.174	22.355	399.442	179,97	29,37	319.452	46.493	23.586	389.530
5	2002	156,09	337.624	41.783	21.272	400.679	185,46	334.747	43.025	20.062	397.833	179,96	29,37	319.452	49.625	13.631	382.707
6	2002	156,38	337.638	42.168	49.508	429.315	186,75	334.986	42.875	44.652	422.513	179,31	30,37	321.329	55.439	19.643	387.489
7	2002	155,88	338.745	44.261	24.925	407.931	186,25	335.905	46.084	22.507	404.496	179,65	30,37	321.329	55.439	10.098	386.866
8	2002	156,90	338.250	46.185	437.929	822.364	186,64	335.764	47.165	460.333	843.263	180,54	29,74	322.648	52.338	578.534	953.519
9	2002	156,07	342.162	42.421	22.390	406.972	185,44	339.774	44.185	21.878	405.838	181,76	29,37	327.088	53.562	19.159	399.809
10	2002	155,40	342.383	44.808	20.159	407.350	184,77	339.952	45.016	18.838	403.806	180,91	29,37	327.088	46.119	11.847	385.054
11	2002	156,39	342.782	43.241	21.576	407.599	185,76	340.301	42.860	20.399	403.559	181,42	29,37	327.088	40.833	14.128	382.049
12	2002	156,42	342.154	66.448	119.058	527.660	185,79	339.772	64.767	112.315	516.854	181,01	29,37	327.088	55.810	76.402	459.299

Ýmsir, ríkisstarfsmenn

Maí 2003

Kjaradómur aðrir

		Kjarlar										Konur									
MA	AR	STG	DL	YL	ÖL	HL	STG	DL	YL	ÖL	HL	Km.di.	STG	DL	YL	ÖL	HL				
1	2002	57,66	353,521	20,132	14,916	388,569	84,89	346,440	14,948	13,678	375,066	113,21	27,23	331,447	3,971	11,058	346,475				
2	2002	57,88	352,551	18,162	14,889	385,602	85,77	345,405	13,515	13,318	372,238	113,18	27,90	330,579	3,876	10,059	344,514				
3	2002	60,26	345,639	23,139	13,670	382,448	89,43	339,973	16,801	12,578	369,352	110,93	29,17	328,268	3,707	10,322	342,297				
4	2002	57,21	354,770	29,097	24,135	408,002	85,75	347,688	20,675	22,562	390,925	113,40	28,54	333,490	3,789	19,408	356,687				
5	2002	60,83	354,177	14,624	13,286	382,088	89,79	345,377	11,111	12,354	368,842	112,69	28,96	326,896	3,733	10,396	341,026				
6	2002	61,96	358,274	29,284	13,971	401,529	88,96	351,943	21,648	13,217	386,808	114,34	27,00	337,415	4,125	11,487	353,026				
7	2002	58,97	368,621	15,942	14,679	399,242	86,23	362,031	12,195	13,635	387,861	117,52	27,26	347,773	4,086	11,379	363,237				
8	2002	56,70	359,863	14,929	15,267	390,060	83,70	352,622	11,444	14,048	378,113	115,08	27,00	337,415	4,125	11,487	353,026				
9	2002	56,86	362,590	14,732	15,225	392,547	83,93	355,413	11,306	14,009	380,727	115,40	27,08	340,342	4,113	11,454	355,909				
10	2002	58,43	364,199	14,868	15,191	394,258	87,09	356,619	11,254	13,753	381,627	115,19	28,66	341,166	3,886	10,822	355,873				
11	2002	58,11	365,721	14,798	16,027	396,546	86,81	357,815	11,189	14,301	383,305	115,78	28,70	341,804	3,881	10,807	356,492				
12	2002	56,99	363,552	33,093	49,209	445,854	84,39	355,078	23,667	47,455	426,200	114,82	27,40	337,453	4,064	43,808	385,325				

Kjaranefnd aðrir

Kaupmáttur miðast við 03/1993 = 100,00

		Kjarlar										Konur									
MA	AR	STG	DL	YL	ÖL	HL	STG	DL	YL	ÖL	HL	Km.di.	STG	DL	YL	ÖL	HL				
1	2002	254,13	346,621	13,364	101,836	461,821	310,68	343,567	12,411	99,164	455,141	143,27	56,56	329,844	8,128	87,155	425,126				
2	2002	250,57	346,834	13,446	101,549	461,829	308,89	343,621	12,633	98,932	455,186	143,69	58,32	329,817	9,138	87,687	426,642				
3	2002	251,50	346,538	13,197	100,653	460,388	307,38	343,599	12,592	98,478	454,669	143,07	55,88	330,372	9,871	88,686	428,929				
4	2002	244,57	346,945	14,093	103,630	464,667	301,64	343,702	13,351	102,397	459,449	143,06	57,08	329,804	10,170	97,115	437,089				
5	2002	243,46	346,792	13,670	101,920	462,381	300,66	344,042	13,076	100,662	457,779	143,26	57,20	332,337	10,549	95,305	438,191				
6	2002	247,86	397,781	14,211	76,617	488,609	304,70	394,558	14,027	75,284	483,868	163,59	56,84	380,502	13,221	69,473	463,197				
7	2002	238,82	397,488	13,797	77,051	488,336	298,69	394,077	13,538	75,060	482,675	163,25	60,07	380,513	12,510	67,144	460,167				
8	2002	238,54	397,758	14,212	76,960	488,930	301,13	394,467	13,754	74,789	483,010	164,29	62,59	381,926	12,006	66,514	460,447				
9	2002	236,97	398,133	16,319	75,866	490,317	297,72	394,192	15,591	73,580	483,363	163,33	60,75	378,822	12,752	64,664	456,239				
10	2002	240,84	398,331	17,038	75,787	491,157	302,90	394,438	16,376	74,237	485,050	162,59	62,06	379,330	13,806	68,218	461,354				
11	2002	242,72	398,166	15,356	75,046	488,568	306,90	394,323	14,669	72,556	481,547	162,83	64,18	379,790	12,071	63,138	454,998				
12	2002	245,02	398,513	15,247	125,850	539,610	308,02	394,628	14,643	122,802	532,074	162,84	63,00	379,520	12,297	110,950	502,767				

Ýmsir, ríkisstarfsmenn

Útan félaga		Kjarlar							Konur									
MA	AR	STG	DL	YL	ÖL	HL	HL	STG	DL	YL	ÖL	HL	STG	DL	YL	ÖL	HL	
1	2002	72,02	296,751	101,989	26,799	425,539	425,539	86,52	295,902	94,710	26,861	417,472	417,472	14,50	291,686	58,554	27,164	377,403
2	2002	73,10	296,730	94,012	29,485	420,228	420,228	85,46	295,628	89,795	29,830	415,253	415,253	12,36	289,114	64,855	31,867	385,836
3	2002	75,11	296,914	91,235	27,741	415,889	415,889	88,44	296,125	86,766	28,648	411,540	411,540	13,33	291,683	61,583	33,764	387,029
4	2002	75,00	298,776	89,480	35,293	423,549	423,549	88,50	298,466	87,115	36,791	422,372	422,372	13,50	296,744	73,977	45,114	415,836
5	2002	72,54	295,338	102,954	28,460	426,752	426,752	86,04	295,559	95,413	30,778	421,750	421,750	13,50	296,744	54,893	43,234	394,871
6	2002	75,24	304,419	99,120	25,091	428,630	428,630	90,49	308,253	92,975	27,990	429,218	429,218	15,26	327,160	62,667	42,287	432,115
7	2002	71,60	301,816	92,464	24,667	418,948	418,948	84,10	302,271	91,416	25,403	419,091	419,091	12,50	304,877	85,415	30,917	419,908
8	2002	71,19	303,655	104,873	31,990	440,518	440,518	83,49	303,552	98,499	31,711	433,762	433,762	12,30	302,987	61,606	39,066	394,660
9	2002	70,86	302,988	98,962	24,171	426,121	426,121	82,27	301,810	97,543	24,507	423,860	423,860	11,41	294,495	88,730	26,593	409,818
10	2002	70,87	304,155	102,815	22,516	429,485	429,485	82,19	302,876	99,918	23,065	425,858	425,858	11,32	294,870	81,778	26,502	403,150
11	2002	71,93	305,144	99,328	23,554	428,025	428,025	83,43	303,625	94,929	23,871	422,425	422,425	11,50	294,127	67,416	25,853	387,397
12	2002	72,74	304,910	108,605	62,087	475,601	475,601	84,21	303,451	103,144	63,179	469,775	469,775	11,47	294,204	68,513	70,104	432,821

Kjaradómur, dómamar		Kjarlar							Konur									
MA	AR	STG	DL	YL	ÖL	HL	HL	STG	DL	YL	ÖL	HL	STG	DL	YL	ÖL	HL	
1	2002	37,00	371,059	153,213	53,070	577,342	577,342	49,00	370,566	152,755	47,626	570,948	570,948	12,00	369,046	151,343	30,843	551,231
2	2002	37,00	371,059	152,626	34,891	558,576	558,576	49,00	370,566	155,785	36,358	562,710	562,710	12,00	369,046	165,528	40,880	575,453
3	2002	37,00	371,059	153,115	41,624	565,798	565,798	49,00	370,566	152,385	35,612	558,564	558,564	12,00	369,046	150,136	17,078	536,259
4	2002	37,00	371,059	153,409	58,314	582,782	582,782	49,99	370,142	149,947	51,190	571,279	571,279	12,99	367,530	140,087	30,897	538,515
5	2002	36,44	371,215	150,928	39,923	562,067	562,067	47,47	370,998	151,885	39,594	562,477	562,477	11,03	370,280	155,047	38,508	563,834
6	2002	36,00	382,467	155,591	45,002	583,059	583,059	47,00	382,083	154,979	42,167	579,229	579,229	11,00	380,830	152,975	32,888	566,692
7	2002	36,82	382,264	158,210	40,293	580,767	580,767	47,82	381,934	157,240	37,184	576,358	576,358	11,00	380,830	153,992	26,778	561,600
8	2002	37,00	382,191	163,455	46,112	591,759	591,759	48,00	381,879	160,976	37,437	580,292	580,292	11,00	380,830	152,636	8,258	541,724
9	2002	37,00	382,545	157,881	38,774	579,200	579,200	48,00	382,152	157,740	34,933	574,824	574,824	11,00	380,830	157,266	22,012	560,107
10	2002	37,00	382,191	155,591	36,735	574,518	574,518	48,00	381,879	155,586	33,510	570,976	570,976	11,00	380,830	155,570	22,663	559,063
11	2002	37,00	383,091	159,739	40,943	583,773	583,773	48,00	382,573	159,872	36,352	578,797	578,797	11,00	380,830	160,318	20,911	562,059
12	2002	37,00	383,250	159,569	73,600	616,420	616,420	48,00	382,695	158,575	68,687	609,957	609,957	11,00	380,830	155,231	52,159	588,219

Kjaranefnd Prestar Þjóðkirkjunnar*Kaupmáttur miðast við 01/1993 = 100,00 og tvöfalt mánaðarkaup greiddist í febrúar ár hvert sem og stöðugildi.*

		Karlar					Allir					Konur					
MA	AR	STG	DL	YL	ÖL	HL	STG	DL	YL	ÖL	HL	Km.dl.	STG	DL	YL	ÖL	HL
1	2002	108,00	228.028	117	55.940	284.084	139,69	228.248	173	54.854	283.275	171,64	31,69	228.998	363	51.156	280.517
2	2002	218,75	223.627	58	27.715	251.400	279,26	223.719	45	27.222	250.987	168,69	60,51	224.054	0	25.441	249.494
3	2002	108,73	227.655	116	55.776	283.547	138,75	227.927	91	54.692	282.710	171,14	30,02	228.914	0	50.764	279.678
4	2002	108,01	226.851	0	56.275	283.125	138,56	227.227	0	54.796	282.023	170,55	30,56	228.555	0	49.569	278.125
5	2002	107,62	226.912	0	56.383	283.295	138,17	227.275	0	54.876	282.152	170,65	30,56	228.555	0	49.569	278.125
6	2002	108,04	260.326	0	56.202	316.527	138,73	260.744	0	54.884	315.628	194,94	30,69	262.218	0	50.242	312.460
7	2002	174,95	260.740	0	46.605	307.345	222,77	261.331	0	45.897	307.228	195,21	47,82	263.493	0	43.306	306.799
8	2002	105,13	262.575	0	75.680	338.255	138,13	263.101	63	73.880	337.044	197,60	33,00	264.777	263	68.147	333.187
9	2002	109,98	262.739	0	75.775	338.514	143,98	263.203	0	73.918	337.121	196,66	34,00	264.703	0	67.912	332.615
10	2002	110,81	262.717	0	75.597	338.314	146,61	263.162	0	73.130	336.292	195,61	35,80	264.542	0	65.495	330.036
11	2002	114,04	262.935	0	74.521	337.457	147,11	263.346	0	73.080	336.427	196,09	33,07	264.765	0	68.111	332.875
12	2002	112,20	262.989	0	121.808	384.797	145,60	263.400	0	120.295	383.695	196,00	33,40	264.782	0	115.212	379.994

Stéttarfélag íslenskra lyfjafraeðinga*Kaupmáttur miðast við meðaltal ársins 1991 = 100,00*

		Karlar					Allir					Konur					
MA	AR	STG	DL	YL	ÖL	HL	STG	DL	YL	ÖL	HL	Km.dl.	STG	DL	YL	ÖL	HL
1	2002						20,92	225.600	82.672	6.904	315.175	115,34					
2	2002						22,93	225.439	84.204	8.087	317.730	115,58					
3	2002						23,03	225.515	78.749	9.213	313.477	115,13					
4	2002						23,03	225.515	115.643	32.632	373.790	115,08					
5	2002						23,03	225.515	76.492	9.631	311.638	115,13					
6	2002						22,91	225.474	32.877	5.631	263.983	114,62					
7	2002						22,17	237.633	89.536	4.177	331.346	120,69					
8	2002						22,34	237.440	85.330	1.792	324.562	121,25					
9	2002						22,03	238.712	94.499	4.124	337.335	121,27					
10	2002						22,73	238.921	93.391	3.726	336.038	120,74					
11	2002						21,89	238.701	94.641	3.508	336.850	120,85					
12	2002						21,94	238.669	88.464	41.360	368.493	120,75					

Ýmsir, ríkisstarfsmenn

Kaupmáttur miðast við 01/1991 = 100,00

Starfsmannafélag Alþingis		Karlar					Allir					Konur					
		MA	AR	STG	DL	YL	ÖL	HL	STG	DL	YL	ÖL	HL	STG	DL	YL	ÖL
1	2002	68,43	222,491	14,156	86,791	323,438	140,65	207,339	12,378	59,728	279,444	154,91	72,22	192,983	10,693	34,087	237,764
2	2002	68,35	223,242	13,251	78,005	314,498	140,83	208,572	13,310	55,505	277,387	156,26	72,48	194,740	13,365	34,288	242,392
3	2002	69,43	223,038	16,437	76,934	316,409	141,41	209,278	16,893	56,050	282,221	156,13	71,98	196,006	17,333	35,907	249,246
4	2002	69,10	228,885	29,197	186,391	444,474	141,85	214,660	29,948	157,184	401,792	160,07	72,75	201,149	30,661	129,443	361,254
5	2002	69,85	224,277	28,249	77,211	329,737	142,46	209,207	29,912	55,107	294,225	156,07	72,61	194,710	31,511	33,843	260,064
6	2002	72,75	224,679	12,042	71,879	308,601	142,46	211,408	9,567	53,502	274,477	157,04	69,71	197,558	6,985	34,323	238,866
7	2002	72,02	223,152	6,746	73,516	303,413	141,06	210,158	5,798	55,127	271,084	155,97	69,04	196,604	4,809	35,946	237,360
8	2002	71,44	223,982	14,952	75,428	314,362	140,59	210,654	10,058	58,528	279,239	157,19	69,15	196,884	5,001	41,068	242,954
9	2002	68,01	226,048	10,822	75,587	312,456	139,43	210,336	7,893	54,991	273,220	156,14	71,42	195,373	5,104	35,377	235,854
10	2002	66,84	228,318	35,309	77,454	341,080	138,86	210,661	26,863	55,870	293,394	155,57	72,02	194,273	19,025	35,837	249,135
11	2002	67,84	227,916	19,013	76,721	323,649	143,12	210,170	15,062	54,443	279,675	155,49	75,27	194,176	11,500	34,365	240,041
12	2002	69,44	228,236	42,132	113,921	384,289	147,16	211,472	31,895	91,167	334,534	156,34	77,72	196,492	22,748	70,836	290,076

3.5 Starfsmenn Reykjavíkurborgar

Kaupmáttur hjá Reykjavíkurborg miðast við meðaltal 1990 = 100,00, nema annað sé tekið fram.

Máí 2003

Starfsmannafélag Reykjavíkurborgar án háskólahóps

		Kartlar						Allir						Konur					
MA	AR	STG	DL	YL	ÖL	HL	STG	DL	YL	ÖL	HL	Km.dl.	STG	DL	YL	ÖL	HL		
1	2002	718,82	138,498	73,180	18,408	230,086	1,782,74	132,635	44,823	10,836	188,294	143,94	1,063,92	128,674	25,663	5,721	160,058		
2	2002	1,210,56	136,675	75,678	20,131	232,484	3,193,01	131,538	44,945	11,249	187,733	143,14	1,982,45	128,402	26,179	5,826	160,407		
3	2002	990,00	141,127	48,496	12,237	201,860	2,324,39	136,339	32,700	7,548	176,587	147,74	1,334,39	132,787	20,981	4,069	157,837		
4	2002	742,00	138,897	77,901	15,846	232,644	1,855,47	133,806	47,783	9,325	190,914	144,93	1,113,47	130,413	27,713	4,980	163,106		
5	2002	743,81	138,308	67,015	15,788	221,111	1,903,24	133,177	42,700	9,301	185,179	144,31	1,159,42	129,886	27,101	5,140	162,127		
6	2002	966,55	129,763	49,355	13,025	192,143	2,297,90	127,129	33,861	8,366	169,355	137,17	1,331,34	125,216	22,612	4,983	152,811		
7	2002	977,47	129,039	45,348	12,203	186,591	2,264,39	127,285	32,863	8,249	168,397	137,22	1,286,92	125,953	23,380	5,246	154,579		
8	2002	821,86	135,513	57,483	14,080	207,076	2,007,24	132,470	38,793	9,161	180,424	143,58	1,185,38	130,360	25,834	5,751	161,946		
9	2002	721,83	139,378	63,791	16,716	219,885	1,849,88	135,306	40,874	9,531	185,711	145,90	1,128,05	132,700	26,210	4,933	163,843		
10	2002	721,73	139,282	59,532	16,955	215,769	1,862,33	135,242	39,720	9,491	184,452	145,07	1,140,60	132,685	27,183	4,767	164,636		
11	2002	727,21	139,350	57,267	17,781	214,398	1,873,13	135,163	36,584	9,934	181,681	145,25	1,145,92	132,505	23,459	4,955	160,919		
12	2002	729,97	143,294	55,513	55,392	254,199	1,868,80	138,902	36,690	47,263	222,855	149,16	1,138,83	136,088	24,624	42,052	202,764		

Starfsmannafélag Reykjavíkurborgar háskólahópur

		Kartlar						Allir						Konur					
MA	AR	STG	DL	YL	ÖL	HL	STG	DL	YL	ÖL	HL	Km.dl.	STG	DL	YL	ÖL	HL		
1	2002	83,26	213,458	56,045	3,790	273,292	314,88	186,658	32,126	3,480	222,264	138,68	231,62	177,024	23,528	3,368	203,920		
2	2002	120,46	212,432	87,516	6,144	306,092	441,56	187,297	47,270	5,122	239,689	139,53	321,10	177,867	32,172	4,738	214,778		
3	2002	108,44	220,270	57,540	2,971	280,781	340,44	198,994	36,701	3,361	239,056	147,62	232,00	189,050	26,961	3,543	219,554		
4	2002	77,17	216,462	87,687	4,938	309,087	261,16	190,939	52,064	4,169	247,173	141,59	184,00	180,235	37,124	3,847	221,206		
5	2002	80,87	215,947	88,458	3,165	307,570	272,01	191,200	49,155	3,495	243,850	141,84	191,13	180,729	32,526	3,635	216,890		
6	2002	90,22	210,049	65,073	3,658	278,779	289,74	189,916	42,841	2,980	235,737	140,28	199,52	180,813	32,788	2,673	216,274		
7	2002	86,77	213,063	59,490	3,434	275,986	275,27	191,868	36,451	3,668	231,988	141,60	188,50	182,112	25,846	3,777	211,735		
8	2002	85,95	210,816	60,991	3,084	274,891	267,56	191,835	40,516	3,486	235,838	142,35	181,61	182,852	30,827	3,677	217,356		
9	2002	82,72	215,836	64,243	5,318	285,396	278,64	193,743	42,503	5,032	241,358	143,02	195,92	184,414	33,438	4,911	222,764		
10	2002	84,24	211,842	69,780	5,500	287,122	285,94	192,162	44,306	4,723	241,191	141,12	201,70	183,943	33,666	4,398	222,008		
11	2002	83,94	211,846	77,630	5,628	295,104	288,38	192,091	51,722	5,017	248,831	141,32	204,44	183,981	41,085	4,766	229,832		
12	2002	86,11	222,050	85,207	45,225	352,482	291,22	198,176	50,349	40,948	289,474	145,69	205,11	188,153	35,715	39,153	263,021		

Starfsmannafélag Reykjavíkurborgar alls.

MA	AR	<i>Karlar</i>						<i>Allir</i>						<i>Konur</i>				
		STG	DL	YL	ÖL	HL	STG	DL	YL	ÖL	HL	Km.dl.	STG	DL	YL	ÖL	HL	
1	2002	802,08	146.279	71.402	16.890	234.571	2.097,62	140.745	42.917	9.732	193.393	145,67	1.295,54	137.318	25.281	5.300	167.900	
2	2002	1.331,02	143.531	76.750	18.865	239.145	3.634,57	138.312	45.228	10.505	194.045	143,55	2.303,55	135.297	27.014	5.674	167.986	
3	2002	1.098,44	148.940	49.389	11.323	209.651	2.664,83	144.344	33.211	7.013	184.568	149,18	1.566,39	141.120	21.867	3.991	166.978	
4	2002	819,17	146.204	78.823	14.818	239.845	2.116,63	140.855	48.311	8.689	197.856	145,51	1.297,46	137.478	29.048	4.819	171.345	
5	2002	824,68	145.922	69.118	14.550	229.590	2.175,24	140.433	43.507	8.575	192.516	145,13	1.350,56	137.081	27.869	4.927	169.877	
6	2002	1.056,77	136.617	50.697	12.225	199.539	2.587,64	134.159	34.866	7.763	176.788	138,06	1.530,87	132.462	23.938	4.682	161.083	
7	2002	1.064,24	135.890	46.501	11.488	193.879	2.539,66	134.285	33.252	7.753	175.290	138,06	1.475,42	133.127	23.695	5.058	161.881	
8	2002	907,80	142.643	57.815	13.039	213.497	2.274,80	139.453	38.995	8.494	186.942	144,16	1.367,00	137.334	26.498	5.475	169.307	
9	2002	804,56	147.239	63.838	15.544	226.621	2.128,52	142.956	41.098	8.942	192.995	147,01	1.323,97	140.353	27.280	4.930	172.562	
10	2002	805,97	146.866	60.603	15.758	223.227	2.148,27	142.818	40.330	8.856	192.004	146,11	1.342,30	140.387	28.158	4.712	173.257	
11	2002	811,15	146.852	59.374	16.523	222.750	2.161,52	142.758	38.604	9.278	190.640	146,31	1.350,37	140.298	26.127	4.926	171.352	
12	2002	816,08	151.604	58.647	54.320	264.570	2.160,02	146.894	38.531	46.412	231.837	150,45	1.343,94	144.034	26.317	41.610	211.960	

Félag íslenskra leikskólakennara hjá Reykjavíkurborg

MA	AR	<i>Karlar</i>					<i>Allir</i>						<i>Konur</i>				
		STG	DL	YL	ÖL	HL	STG	DL	YL	ÖL	HL	Km.dl.	STG	DL	YL	ÖL	HL
1	2002						431,23	163.355	36.264	1.254	200.873	146,17					
2	2002						739,32	160.436	26.085	1.135	187.657	143,95					
3	2002						545,37	169.261	18.938	829	189.028	151,23					
4	2002						424,40	165.610	26.702	1.335	193.647	147,91					
5	2002						438,74	165.316	26.500	1.102	192.917	147,71					
6	2002						434,95	166.717	17.908	1.320	185.945	148,32					
7	2002						408,57	167.934	18.426	1.295	187.655	149,27					
8	2002						415,17	167.846	20.223	1.016	189.085	150,00					
9	2002						434,33	173.459	23.971	1.177	198.607	154,22					
10	2002						433,81	174.119	27.176	1.247	202.541	154,00					
11	2002						434,58	174.951	26.110	1.276	202.337	155,02					
12	2002						435,53	174.790	19.982	46.601	241.374	154,77					

Sjúkraliðafélg Íslands hjá Reykjavíkurborg

MA	AR	Karlur					HL
		STG	DL	YL	ÖL	HL	
1	2002						
2	2002						
3	2002						
4	2002						
5	2002						
6	2002						
7	2002						
8	2002						
9	2002						
10	2002						
11	2002						
12	2002						

STG	DL	YL	ÖL	HL	Km.dl.
49,11	167.516	66.547	27.325	261.388	186,40
93,14	163.138	27.507	28.847	219.492	182,02
56,11	164.706	20.832	19.375	204.914	183,00
49,18	163.680	59.289	22.077	245.046	181,78
49,17	168.135	45.870	23.713	237.718	186,81
46,73	168.814	39.340	22.525	230.678	186,76
46,20	169.095	30.075	15.586	214.755	186,91
45,39	168.527	21.573	10.294	200.394	187,29
44,87	169.602	35.214	16.644	221.461	187,51
45,41	170.460	21.053	20.525	212.037	187,48
44,42	170.853	28.375	21.804	221.032	188,25
45,27	170.396	23.572	52.644	246.611	187,62

STG	DL	YL	ÖL	HL

Háskólamenn innan BHM hjá Reykjavíkurborg

MA	AR	Karlur					HL
		STG	DL	YL	ÖL	HL	
1	2002	66,02	267.779	74.128	1.992	343.899	
2	2002	111,87	267.051	97.170	1.303	365.524	
3	2002	91,26	270.117	59.033	494	329.644	
4	2002	67,44	268.618	81.284	1.456	351.359	
5	2002	67,09	268.080	92.696	690	361.467	
6	2002	68,07	266.722	74.197	1.191	342.110	
7	2002	69,83	264.570	63.172	915	328.657	
8	2002	71,00	266.585	62.388	669	329.643	
9	2002	71,73	268.189	72.207	175	340.570	
10	2002	72,85	269.681	74.178	1.260	345.119	
11	2002	72,65	271.079	81.918	589	353.586	
12	2002	72,58	275.807	93.800	34.827	404.435	

STG	DL	YL	ÖL	HL	Km.dl.
261,72	225.825	41.651	6.339	273.816	188,07
462,16	222.978	49.135	6.267	278.380	186,21
322,49	232.171	34.148	3.911	270.230	193,07
259,25	227.619	45.612	5.246	278.477	189,20
259,97	227.093	51.488	5.373	283.954	188,84
266,93	227.198	40.820	5.753	273.770	188,12
263,95	228.069	38.530	4.582	271.180	188,68
272,16	229.365	37.744	3.810	270.920	190,78
280,07	227.049	38.666	4.312	270.028	187,88
280,65	228.577	39.307	4.528	272.412	188,16
280,22	229.143	41.124	4.685	274.952	188,96
282,52	231.826	45.583	38.236	315.646	191,04

STG	DL	YL	ÖL	HL
195,70	211.673	30.696	7.806	250.174
350,29	208.903	33.794	7.852	250.549
231,23	217.195	24.327	5.260	246.782
191,81	213.202	33.069	6.578	252.850
192,88	212.836	37.154	7.002	256.992
198,86	213.668	29.395	7.314	250.378
194,12	214.938	29.666	5.901	250.505
201,17	216.229	29.047	4.919	250.195
208,35	212.886	27.119	5.736	245.742
207,80	214.166	27.082	5.673	246.921
207,56	214.465	26.844	6.119	247.428
209,95	216.623	28.915	39.415	284.953

Háskólamenn utan bandalaga hjá Reykjavíkurborg

MA	AR	Karlar				
		STG	DL	YL	ÖL	HL
1	2002	100,06	287.028	93.585	4.277	384.890
2	2002	153,49	291.920	131.899	3.382	427.201
3	2002	147,69	280.968	66.536	2.686	350.191
4	2002	101,03	288.109	101.559	3.545	393.213
5	2002	100,43	289.933	110.300	4.010	404.244
6	2002	101,78	288.697	100.529	3.097	392.323
7	2002	102,55	285.738	94.345	3.713	383.795
8	2002	102,66	288.058	85.305	3.414	376.777
9	2002	102,78	287.948	98.942	2.984	389.874
10	2002	101,80	287.948	101.139	3.938	393.026
11	2002	101,78	288.031	95.345	3.818	387.193
12	2002	100,78	294.087	102.507	41.125	437.719

Allir	STG	DL	YL	ÖL	HL	Km.dl.
160,49	289.109	127.559	3.235	419.903	172,34	
150,94	280.492	65.739	2.628	348.859	166,50	
104,01	286.849	99.571	3.444	389.864	170,20	
103,18	288.157	108.290	3.903	400.350	171,05	
104,03	288.131	99.277	3.030	390.438	170,30	
104,80	285.361	93.267	3.633	382.261	168,51	
104,91	287.469	84.399	3.848	375.716	170,68	
105,03	287.294	97.735	2.921	387.950	169,69	
104,05	287.288	99.874	3.853	391.015	168,81	
106,03	286.634	92.847	3.665	383.146	168,73	
105,03	292.944	100.269	40.454	433.667	172,33	

Konur	STG	DL	YL	ÖL	HL
7,00	227.464	32.415	0	259.879	
3,25	258.841	29.518	0	288.359	
2,98	244.138	32.192	0	276.330	
2,75	223.281	34.885	0	258.166	
2,25	262.499	42.637	0	305.136	
2,25	268.175	44.145	0	312.320	
2,25	260.569	43.080	23.679	327.328	
2,25	257.400	42.637	0	300.037	
2,25	257.400	42.637	0	300.037	
4,25	253.189	33.019	0	286.208	
4,25	265.832	47.214	24.544	337.591	

Kennarahópur hjá Reykjavíkurborg

Kaupmáttur miðast við 08/1996 = 100,00

MA	AR	Karlar				
		STG	DL	YL	ÖL	HL
1	2002	298,59	221.408	50.747	11	272.166
2	2002	321,53	219.182	101.642	30	320.855
3	2002	580,40	219.948	30.670	6	250.624
4	2002	299,43	219.309	56.997	11	276.317
5	2002	299,93	220.639	58.784	42.919	322.341
6	2002	298,00	221.299	19.524	0	240.823
7	2002	289,40	221.450	4.919	0	226.369
8	2002	295,71	220.701	10.364	0	231.065
9	2002	293,92	221.498	45.405	0	266.904
10	2002	296,49	221.638	55.155	0	276.793
11	2002	297,37	220.766	46.494	0	267.260
12	2002	299,65	220.412	69.376	42.289	332.078

Allir	STG	DL	YL	ÖL	HL	Km.dl.
1.522,96	202.861	75.012	7	277.879	159,48	
2.792,93	204.119	22.382	3	226.504	159,80	
1.439,17	202.821	39.653	6	242.480	158,71	
1.441,69	203.019	43.744	43.112	289.875	158,93	
1.428,01	203.570	15.922	0	219.492	158,68	
1.401,57	203.852	2.100	15	205.967	158,76	
1.492,12	204.189	6.913	5	211.107	159,89	
1.476,96	204.957	31.233	8	236.198	159,66	
1.478,55	205.697	37.298	8	243.003	159,41	
1.482,32	205.395	32.258	8	237.661	159,46	
1.489,60	205.324	48.774	42.859	296.956	159,29	

Konur	STG	DL	YL	ÖL	HL
1.201,43	198.493	67.885	0	266.378	
2.212,52	199.967	20.208	2	220.177	
1.139,75	198.490	35.097	4	233.591	
1.141,75	198.390	39.793	43.163	281.346	
1.130,01	198.895	14.973	0	213.867	
1.112,17	199.273	1.366	18	200.658	
1.196,40	200.108	6.060	6	206.173	
1.183,04	200.848	27.712	10	228.570	
1.182,06	201.699	32.819	10	234.528	
1.184,94	201.537	28.685	10	230.232	
1.189,95	201.524	43.586	43.002	288.112	

4. Starfsmenn annarra sveitarfélaga

4.1 Inngangur

Ekki birtast nú nýjar tölur um önnur sveitarfélög vegna starfsmannaskorts. Birtar eru sömu tölur og voru í síðasta fréttariti KOS.

KRN og KOS hafa undanfarið safnað launaupplýsingum frá sveitarfélögum víðsvegar að landinu. Áfram verður haldið að safna og birta upplýsingar frá kaupstöðum og sveitarfélögum sem hafa fleiri en 1000 íbúa.

Jafnframt munu upplýsingarnar verða notaðar í úrtak Hagstofu fyrir launa-

vísitölu og vegna tölfræðivinnslu KRN fyrir þá starfsmenn sveitarfélaganna, sem eru innan ASÍ.

4.2 Meðaltöl hjá nokkrum sveitarfélögum árið 2001

Akranes, Akureyri, Árborg, Bessastaðahreppur, Borgarbyggð, Dalvík, Garðabær, Gerðahreppur, Grindavík, Hafnarfjörður, Kópavogur, Mosfellsbær, Reykjanesbær, Seltjarnarnes, Skagafjörður, Vestmannaeyjar og Ölfushreppur

Allir í starfsmannafélögum

Ár	Mán./áfj.	Stg.	DI.	YI.	ÖI.	HI.
2001	1	1.748,84	108.950	16.006	12.415	137.372
	2	1.771,92	110.515	25.288	17.237	153.039
	3	1.843,04	109.571	26.663	16.510	152.743
	4	1.837,85	112.313	26.890	22.579	161.781
	5	1.939,25	121.207	28.294	31.453	180.954
	6	2.034,75	123.372	28.590	35.340	187.312
	7	1.976,94	117.274	25.860	17.041	160.175
	8	1.999,07	113.945	23.676	18.233	155.844
	9	1.908,01	120.587	25.401	19.647	165.635
	10	1.945,99	121.522	28.627	18.092	168.241
	11	1.979,17	119.277	27.478	43.468	190.223
	12	1.935,63	122.520	34.478	48.313	205.311
2001	1.fj.	1.787,93	109.680	22.734	15.415	147.829
	2.fj.	1.937,28	119.152	27.954	30.008	177.117
	3.fj.	1.961,34	117.217	24.969	18.291	160.474
	4.fj.	1.953,60	121.093	30.171	36.642	187.907

Leikskólakennarahópur

Ár	Mán./áfj.	Stg.	DI.	YI.	ÖI.	HI.
2001	1	412,68	120.163	21.400	9.817	151.381
	2	416,98	134.958	32.232	12.963	180.153
	3	426,28	170.439	32.161	14.969	217.570
	4	356,67	176.656	30.908	14.719	222.294
	5	441,73	160.856	28.194	14.648	203.699
	6	452,54	159.910	27.906	14.021	201.837
	7	436,42	156.486	22.121	9.755	188.362
	8	414,95	159.130	19.086	11.482	189.708
	9	361,56	158.421	28.144	12.096	198.671
	10	442,63	163.004	30.935	10.333	204.262
	11	443,43	163.207	34.272	27.433	224.913
	12	324,21	164.623	36.864	41.959	243.436
2001	1.fj.	418,65	142.140	28.649	12.610	183.399
	2.fj.	416,98	165.019	28.864	14.442	208.327
	3.fj.	404,31	157.967	22.878	11.044	191.896
	4.fj.	403,42	163.512	33.746	25.071	222.322

Kennarahópur

Ár	Mán./áfj.	Stg.	DI.	YI.	ÖI.	HI.
2001	1	1.052,58	137.317	12.698	2.546	152.561
	2	1.072,25	137.707	59.940	11.442	209.099
	3	1.064,97	150.350	68.583	17.187	236.121
	4	1.070,58	143.952	67.565	9.970	221.478
	5	1.072,43	143.815	69.251	10.465	223.531
	6	1.068,41	142.819	74.576	20.800	238.196
	7	1.040,35	144.256	11.250	3.703	159.199
	8	1.080,66	184.654	3.861	3.166	191.682
	9	1.025,22	191.047	13.361	8.734	213.152
	10	934,20	200.355	37.142	8.935	246.431
	11	1.086,37	202.089	36.635	9.094	247.818
	12	1.213,99	188.200	59.764	42.879	290.832

Ár	Mán./áfj.	Stg.	DI.	YI.	ÖI.	HI.
2001	1.fj.	1.063,27	141.800	47.237	10.425	199.464
	2.fj.	1.070,47	143.529	70.461	13.739	227.725
	3.fj.	1.048,74	173.379	9.400	5.158	187.937
	4.fj.	1.078,19	196.375	45.462	21.728	263.562

Aðrir starfsmenn utan starfsmannafélaga

Ár	Mán./áfj.	Stg.	DI.	YI.	ÖI.	HI.
2001	1	707,88	137.674	21.712	9.725	169.101
	2	698,33	140.119	49.495	14.136	203.726
	3	503,25	145.507	54.337	20.576	220.420
	4	661,02	145.358	51.558	13.093	209.972
	5	629,31	150.533	59.972	17.553	228.029
	6	681,26	163.731	58.641	19.332	241.706
	7	682,07	142.699	16.871	8.412	167.982
	8	713,52	175.890	11.389	7.384	194.681
	9	739,73	182.858	16.071	6.783	205.712
	10	706,09	185.471	39.032	11.750	236.243
	11	736,99	188.685	39.847	18.143	246.665
	12	760,85	179.938	61.555	49.087	290.555
2001	1.fj.	636,49	140.633	40.471	14.198	195.290
	2.fj.	657,20	153.358	56.691	16.673	226.701
	3.fj.	711,77	167.702	14.762	7.504	189.974
	4.fj.	734,64	184.635	47.080	26.778	258.478

5. Ýmislegt

5.1 Vísitala neysluverðs (framfærsluvísitala) með grunn 1981:

Hér að neðan er yfirlit yfir þróun vísitölu neysluverðs, eins og hún er útgefin af Hagstofu Íslands.

Þessi grunnur er notaður í útreikningum KOS, þegar vegið er með neysluverðs-vísitölunni.

Vísitala neysluverðs frá 1981 samkvæmt Hagstofu Íslands

Álm.	jan.	feb.	mar.	apr.	maí	jún.	júl.	ágú.	sep.	okt.	nóv.	des.
1981	100,00	101,60	104,70	109,40	109,80	115,70	118,30	119,60	124,30	127,50	131,50	138,70
1982	141,10	144,30	152,00	158,80	159,90	168,80	173,60	178,80	194,00	202,10	210,10	221,70
1983	230,90	241,90	267,20	285,40	298,50	327,20	340,00	362,50	365,20	376,50	386,90	391,60
1984	394,40	397,00	401,30	407,00	410,60	420,20	424,10	430,70	433,40	438,20	443,80	465,30
1985	485,40	502,10	515,70	524,40	535,40	545,30	558,50	575,30	590,20	603,30	616,60	632,50
1986	651,10	666,00	655,80	659,80	671,10	675,50	678,40	686,10	694,20	697,20	711,50	718,00
1987	734,60	745,40	756,50	767,00	776,40	791,90	805,80	825,80	835,20	849,00	876,10	893,40
1988	926,60	934,40	943,00	956,60	973,40	1.006,90	1.041,80	1.063,40	1.071,20	1.074,80	1.075,50	1.077,50
1989	1.095,50	1.112,00	1.142,50	1.167,30	1.190,30	1.225,40	1.233,90	1.250,50	1.275,90	1.301,10	1.320,70	1.349,30
1990	1.355,70	1.377,80	1.389,20	1.393,40	1.406,00	1.415,70	1.425,00	1.429,40	1.429,20	1.433,10	1.442,90	1.446,40
1991	1.455,50	1.459,80	1.463,30	1.470,10	1.487,70	1.508,20	1.518,00	1.529,70	1.538,90	1.551,00	1.557,50	1.555,80
1992	1.559,60	1.566,10	1.563,30	1.563,20	1.562,10	1.567,60	1.571,50	1.571,50	1.569,90	1.570,90	1.570,90	1.579,10
1993	1.597,50	1.608,50	1.610,40	1.615,00	1.618,80	1.617,80	1.632,20	1.647,30	1.652,50	1.662,20	1.662,20	1.654,00
1994	1.648,30	1.649,90	1.651,80	1.653,80	1.653,80	1.655,70	1.658,60	1.659,60	1.664,50	1.662,50	1.661,60	1.662,50
1995	1.675,20	1.677,10	1.674,20	1.672,30	1.675,20	1.677,10	1.682,00	1.688,80	1.694,70	1.702,40	1.696,60	1.695,60
1996	1.702,40	1.705,40	1.708,30	1.711,20	1.721,90	1.720,00	1.721,90	1.732,60	1.736,50	1.737,50	1.738,50	1.730,70
1997	1.736,50	1.737,50	1.736,50	1.749,20	1.746,20	1.750,10	1.753,10	1.757,90	1.764,70	1.770,60	1.768,60	1.765,70
1998	1.754,40	1.771,60	1.778,40	1.782,30	1.788,10	1.791,00	1.787,10	1.777,40	1.779,30	1.787,10	1.792,0	1.788,70
1999	1.798,80	1.795,90	1.804,60	1.814,40	1.823,10	1.838,20	1.844,20	1.851,20	1.867,00	1.881,60	1.881,70	1.888,10
2000	1.902,60	1.897,50	1.911,50	1.923,40	1.930,80	1.938,50	1.948,20	1.938,20	1.942,20	1.961,60	1.966,90	1.966,70
2001	1.970,30	1.973,90	1.985,60	2.009,90	2.038,10	2.069,30	2.085,30	2.092,00	2.105,80	2.119,30	2.126,60	2.136,50
2002	2.156,20	2.150,30	2.159,40	2.160,30	2.159,40	2.168,70	2.170,60	2.158,90	2.170,10	2.181,40	2.177,50	2.179,00

REGLUGERÐ UM NEFND UM KJARARANNSÓKNIR
OPINBERRA STARFSMANNA

1. gr.

Nefnd um kjararannsóknir opinberra starfsmanna starfar í þeim tilgangi að safna saman og miðla upplýsingum um kjör starfsmanna hjá opinberum aðilum, kjör annarra launþega og þróun launa og kjaramála almennt til þeirra, sem að nefndinni standa, sbr. 4. gr.

2. gr.

Nefndin aflar upplýsinga um kjör, sbr. 1. gr., sem hér segir:

1. Með söfnun, skipulagningu og skráningu upplýsinga um laun og önnur kjaratriði opinberra starfsmanna, sem aðilar að nefndinni leggja henni til.
2. Með öflun og skipulegri skráningu upplýsinga frá öðrum aðilum, sem stunda reglubundnar kjararannsóknir.
3. Með gerð sérstakra athugana, sem aðilar að nefndinni ákveða hverju sinni.

3. gr.

Nefndin miðlar upplýsingum til þeirra opinberu vinnuveitenda, sem láta nefndinni í té upplýsingar og stéttarféлага starfsmanna þeirra með reglulegum skýrslum og sérstökum skýrslum eftir því sem við á.

Allar upplýsingar, sem safnað er eða unnar eru á vegum nefndarinnar, aðrar en þær, sem nefndin birtir, sbr. fyrri málsgrein, eru trúnaðarmál og er einstökum aðilum að nefndinni óheimilt að notfæra sér þær eða birta án samþykkis allra nefndarmanna.

4. gr.

Nefndin er skipuð 10 fulltrúum. Tveir fulltrúar vinnuveitenda eru tilnefndir af fjármálaráðherra, einn af launanevnd sveitarfélaga, einn af Reykjavíkurborg og einn úr hópi forsvarsmanna sjálfseignarstofnana samkvæmt nánari ákvörðun fjármálaráðherra.

Þrjú fulltrúar launþega skulu tilnefndir af BSRB, einn af BHMIR og einn af KÍ. Nefndin skiptir með sér verkum og ákveður sér framkvæmdastjórn.

5. gr.

Nefndin setur sér starfsreglur, m.a. um starfssvið og starfshætti og ákveður nánar með hvaða hætti hún hagar störfum að verkefnum skv. 1.-3. grein. Nefndin skal kosta kapps um að skapa einhug um lausn þeirra verkefna sem henni eru falin. Ákvarðanir um verkefni og birtingu á niðurstöðum verða ekki teknar með afli atkvæða.

6. gr.

Kostnaður vegna starfa nefndarinnar greiðist úr ríkissjóði samkvæmt fjárveitingum í fjárlögum. Nefndin ræður sér sjálf starfsmenn.

7. gr.

Reglugerð þessi er sett samkvæmt lögum nr. 94 31. desember 1986, um kjarasamninga opinberra starfsmanna og öðlast þegar gildi.

Fjármálaráðuneytið 7. júlí 1987

Þorsteinn Pálsson (sign)
Indriði H. Þorláksson (sign)



**Kjararannsóknarnefnd
opinberra starfsmanna
Borgartúni 21, 105 R.**